

CITY OF PITTSBORO, INDIANA

SIDEWALK INVENTORY

Table of Contents

Area #1	Pages 1 - 9
Area #2	Pages 10 - 19
Area #3	Pages 20 - 64
Area #4	Pages 65 - 96
Area #5	Pages 97 - 114
Area #6	Pages 115 - 122
Area #7	Pages 123 - 154
Area #8	Pages 155 - 173
Area #9	Pages 174 - 179

Search Records

status

assigned to

project

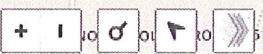
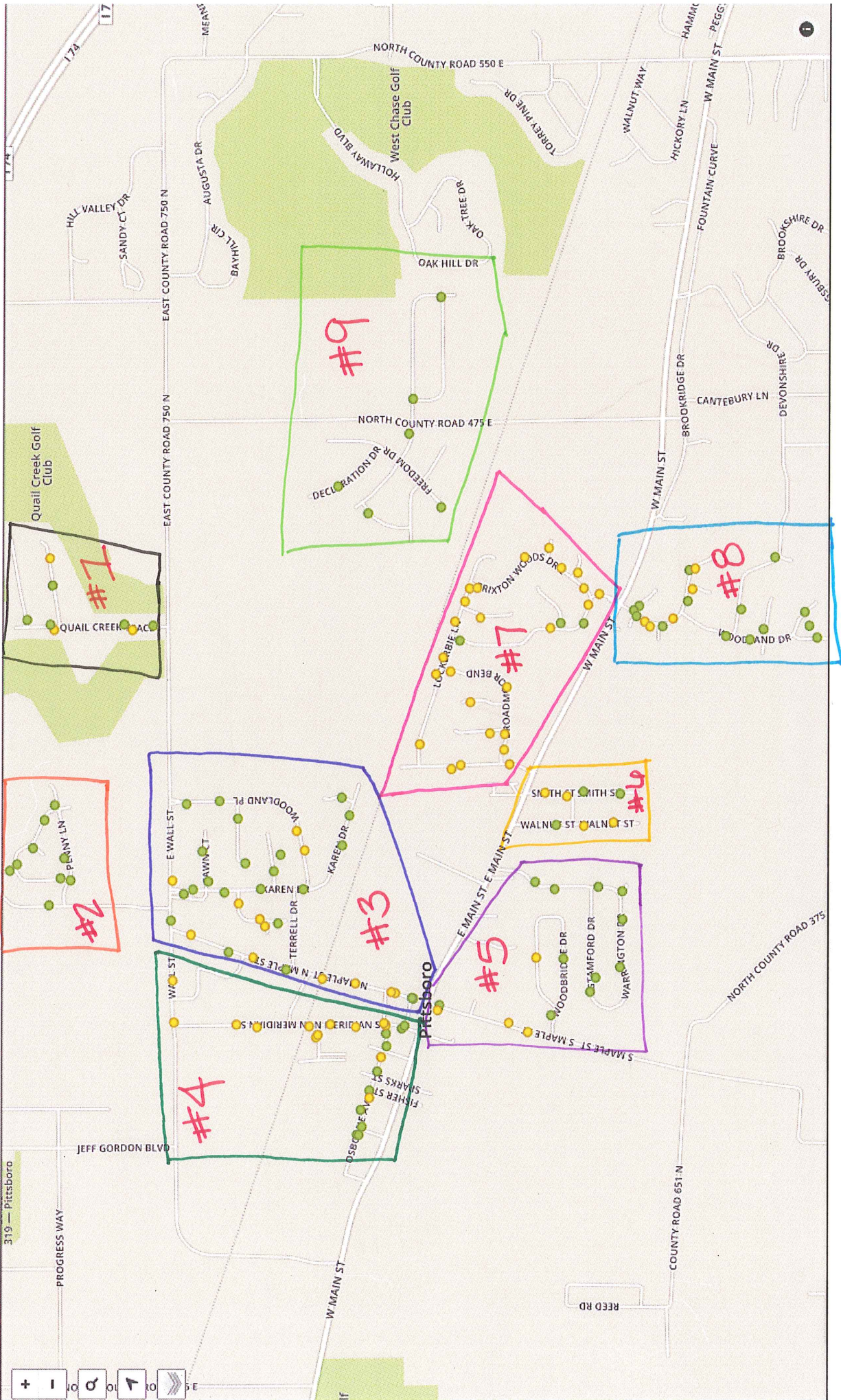
Apply Filter



No Status Filter

No Assigned To Filter

No Project Filter



South of clubhouse rd

Created	2015-05-21 18:01:23 UTC by Tablet App2
Updated	2015-05-21 18:01:23 UTC by Tablet App2
Location	39.8725997284426, -86.4523139689923
Status	■ Not Urgent

Identification

Segment	South of clubhouse rd
Side	E
Date	2015-05-21
Surveyor	Jack
Street	Quail Ridge tr

Inspection Data

Sidewalk Cross Slope	less than 2%
Sidewalk Running Slope	1.6
Sidewalk Width Without Curb Feet	4
Sidewalk Width Without Curb Inch	0

Photo of Block



South of clubhouse rd

Created	2015-05-21 17:58:30 UTC by Tablet App2
Updated	2015-05-21 17:58:30 UTC by Tablet App2
Location	39.8732504574953, -86.4524819423318
Status	■ Needed

Identification

Segment	South of clubhouse rd
Side	W
Date	2015-05-21
Surveyor	Jack
Street	Quail Ridge tr

Inspection Data

Sidewalk Cross Slope	greater than 3%
Sidewalk Running Slope	1.4
Sidewalk Width Without Curb Feet	4
Sidewalk Width Without Curb Inch	0
Comments	MH casting. Some x slopes < 2%. Some over 6%

Photo of Block



Photo



North of clubhouse rd

Created	2015-05-21 18:05:47 UTC by Tablet App2
Updated	2015-05-21 18:06:01 UTC by Tablet App2
Location	39.8735123919694, -86.452265605411
Status	■ Not Urgent

Identification

Segment	North of clubhouse rd
Side	E
Date	2015-05-21
Surveyor	Jack
Street	Quail Ridge tr

Inspection Data

Sidewalk Cross Slope	less than 2%
Sidewalk Running Slope	2
Sidewalk Passing Space	Yes
Sidewalk Width Without Curb Feet	4
Sidewalk Width Without Curb Inch	0
Comments	4 raised panels 3/4"

Photo of Block



Created	2015-05-21 18:32:00 UTC by Tablet App2
Updated	2015-05-21 18:32:00 UTC by Tablet App2
Location	39.875776176378, -86.4507431165189
Status	■ Not Urgent

Identification

Side	N
Date	2015-05-21
Surveyor	Jack
Street	Quail Ridge tr south

Inspection Data

Sidewalk Cross Slope	less than 2%
Sidewalk Running Slope	0.9
Sidewalk Width Without Curb Feet	4
Sidewalk Width Without Curb Inch	0
Comments	3 raised panels 3/4".

Photo of Block



Created	2015-05-21 18:37:17 UTC by Tablet App2
Updated	2015-05-21 18:37:17 UTC by Tablet App2
Location	39.8758600373192, -86.4496854879767
Status	■ Needed

Identification

Side	S
Date	2015-05-21
Surveyor	Jack
Street	Quail Ridge tr

Inspection Data

Sidewalk Cross Slope	less than 2%
Sidewalk Running Slope	0.8
Sidewalk Width Without Curb Inch	0
Comments	X slope through 4 drives > 3%

Photo of Block



North of clubhouse rd

Created	2015-05-21 17:52:02 UTC by Tablet App2
Updated	2015-05-21 17:52:02 UTC by Tablet App2
Location	39.8757182722753, -86.4524771410251
Status	■ Needed

Identification

Segment	North of clubhouse rd
Side	W
Date	2015-05-21
Surveyor	Jack
Street	Quail Ridge tr

Inspection Data

Sidewalk Cross Slope	2 - 3%
Sidewalk Running Slope	1.2
Sidewalk Vertical Discontinuities	Yes
Sidewalk Width Without Curb Feet	4
Sidewalk Width Without Curb Inch	0
Comments	About half of this area is < 2% x slope. Sidewalk settlement at drives 3/4"

Photo of Block



North of Quail Ridge tr south

Created	2015-05-21 18:07:56 UTC by Tablet App2
Updated	2015-05-21 18:07:56 UTC by Tablet App2
Location	39.8758395854755, -86.4522745740474
Status	■ Not Urgent

Identification

Segment	North of Quail Ridge tr south
Side	E
Date	2015-05-21
Surveyor	Jack
Street	Quail Ridge tr

Inspection Data

Sidewalk Cross Slope	less than 2%
Sidewalk Running Slope	0.2
Sidewalk Width Without Curb Inch	0

Photo of Block



Created	2015-05-21 18:20:31 UTC by Tablet App2
Updated	2015-05-21 18:20:31 UTC by Tablet App2
Location	39.8765778215973, -86.4520930220247
Status	■ Not Urgent

Identification

Side	Both
Date	2015-05-21
Surveyor	Jack
Street	Quail Ridge tr north

Inspection Data

Sidewalk Cross Slope	less than 2%
Sidewalk Running Slope	0.2
Sidewalk Width Without Curb Feet	4
Sidewalk Width Without Curb Inch	0
Comments	Only 50% of lots built on. Walk not in at empty lots

Photo of Block



Created	2015-05-21 19:07:16 UTC by Tablet App2
Updated	2015-05-21 19:24:21 UTC by Tablet App2
Location	39.8751767445727, -86.4622586780102
Status	■ Not Urgent

Identification

Side	S
Date	2015-05-21
Surveyor	Jack
Street	Penny Ln

Inspection Data

Sidewalk Cross Slope	less than 2%
Sidewalk Running Slope	0.6
Sidewalk Width Without Curb Feet	4
Sidewalk Width Without Curb Inch	0

Photo of Block



Created	2015-05-21 19:15:17 UTC by Tablet App2
Updated	2015-05-21 19:24:47 UTC by Tablet App2
Location	39.8754941253363, -86.4621783793778
Status	■ Not Urgent

Identification

Side	Both
Date	2015-05-21
Surveyor	Jack
Street	Blue Jay

Inspection Data

Sidewalk Cross Slope	less than 2%
Sidewalk Running Slope	0.4
Sidewalk Width Without Curb Feet	4
Sidewalk Width Without Curb Inch	0
Comments	Valve box up 3/4"

Photo of Block



Photo



Created	2015-05-21 19:11:38 UTC by Tablet App2
Updated	2015-05-21 19:24:12 UTC by Tablet App2
Location	39.8753821431099, -86.4613947552503
Status	■ Not Urgent

Identification

Side	N
Date	2015-05-21
Surveyor	Jack
Street	Penny Ln

Inspection Data

Sidewalk Cross Slope	less than 2%
Sidewalk Running Slope	0.2
Sidewalk Width Without Curb Feet	4
Sidewalk Width Without Curb Inch	0

Photo of Block



Created	2015-05-21 20:11:10 UTC by Tablet App2
Updated	2015-05-21 20:11:10 UTC by Tablet App2
Location	39.8756845621764, -86.4593233355195
Status	■ Not Urgent

Identification

Side	Both
Date	2015-05-21
Surveyor	Jack
Street	Penny ct

Inspection Data

Sidewalk Cross Slope	less than 2%
Sidewalk Running Slope	0.5
Sidewalk Width Without Curb Inch	0

Photo of Block



Created	2015-05-21 19:56:44 UTC by Tablet App2
Updated	2015-05-21 19:56:44 UTC by Tablet App2
Location	39.8760039965062, -86.4599090629131
Status	■ Not Urgent

Identification

Side	Both
Surveyor	Jack
Street	Abbey rd

Inspection Data

Sidewalk Cross Slope	less than 2%
Sidewalk Running Slope	0.3
Sidewalk Surface Discontinuities	Yes
Sidewalk Width Without Curb Feet	4
Sidewalk Width Without Curb Inch	0
Comments	2 empty lots

Photo of Block



Created	2015-05-21 19:48:25 UTC by Tablet App2
Updated	2015-05-21 19:53:22 UTC by Tablet App2
Location	39.8763692379369, -86.4610008058012
Status	■ Not Urgent

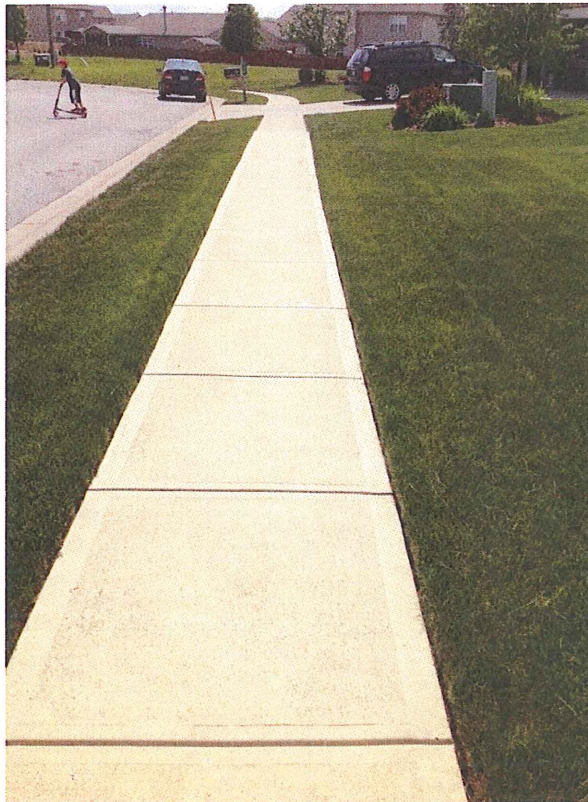
Identification

Side	Both
Date	2015-05-21
Surveyor	Jack
Street	Roundabout Cir

Inspection Data

Sidewalk Cross Slope	less than 2%
Sidewalk Running Slope	0.5
Sidewalk Surface Discontinuities	Yes
Sidewalk Width Without Curb Inch	0
Comments	2 empty lots

Photo of Block



North of Roundabout Cir

Created	2015-05-21 19:45:12 UTC by Tablet App2
Updated	2015-05-21 19:46:09 UTC by Tablet App2
Location	39.8768768040835, -86.4616328013003
Status	■ Not Urgent

Identification

Segment	North of Roundabout Cir
Side	Both
Date	2015-05-21
Surveyor	Jack
Street	Abbey rd

Inspection Data

Sidewalk Cross Slope	less than 2%
Sidewalk Running Slope	1.6
Sidewalk Surface Discontinuities	Yes
Sidewalk Width Without Curb Inch	0
Comments	Undeveloped lot

Photo of Block



Created	2015-05-21 19:31:16 UTC by Tablet App2
Updated	2015-05-21 19:31:16 UTC by Tablet App2
Location	39.8771083541586, -86.461885515681
Status	■ Not Urgent

Identification

Side	Both
Date	2015-05-21
Surveyor	Jack
Street	Squire

Inspection Data

Sidewalk Cross Slope	less than 2%
Sidewalk Running Slope	0.4
Sidewalk Width Without Curb Feet	4
Sidewalk Width Without Curb Inch	0

Photo of Block



Created	2015-05-21 20:23:45 UTC by Tablet App2
Updated	2015-05-21 20:23:45 UTC by Tablet App2
Location	39.8758568941056, -86.4632329066158
Status	■ Not Urgent

Identification

Side	E
Date	2015-05-21
Surveyor	Jack
Street	CR 401 e

Inspection Data

Sidewalk Cross Slope	less than 2%
Sidewalk Running Slope	0.4
Sidewalk Width Without Curb Feet	4
Sidewalk Width Without Curb Inch	0

Photo of Block



Maple to Karen

Created	2015-05-21 16:58:46 UTC by Tablet App2
Updated	2015-05-21 17:01:17 UTC by Tablet App2
Location	39.8720004642754, -86.463822741142
Status	■ Not Urgent

Identification

Segment	Maple to Karen
Side	S
Date	2015-05-21
Surveyor	Jack
Street	Wall

Inspection Data

Sidewalk Cross Slope	less than 2%
Sidewalk Running Slope	0.5
Sidewalk Width Without Curb Feet	4
Sidewalk Width Without Curb Inch	0
Comments	Walk up 1.5" at drive

Photo of Block



Photo



Poplar to Wall

Created	2015-05-20 19:32:51 UTC by Tablet App2
Updated	2015-05-20 23:09:51 UTC by Tablet App2
Location	39.87136121843, -86.4643785451413
Status	■ Needed

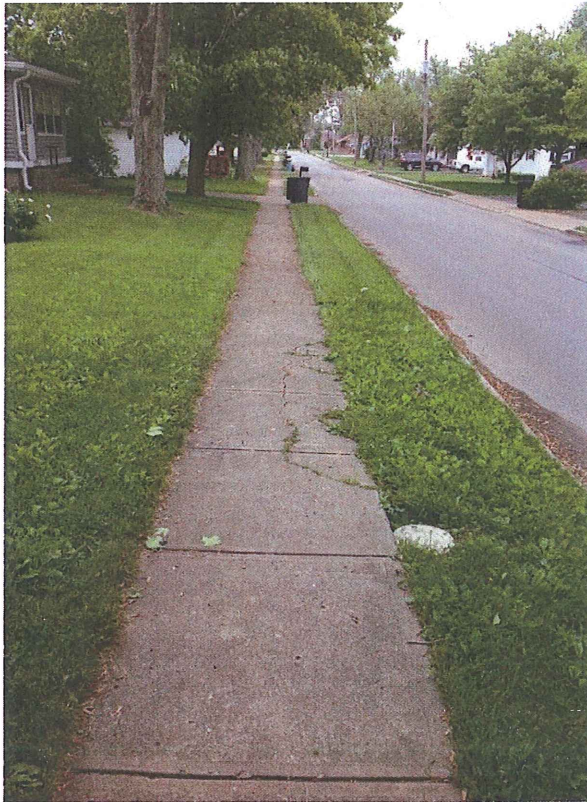
Identification

Segment	Poplar to Wall
Side	E
Date	2015-05-20
Surveyor	Jack
Street	Maple

Inspection Data

Sidewalk Obstructions	Yes
Sidewalk Cross Slope	less than 2%
Sidewalk Running Slope	2.4
Sidewalk Width Without Curb Feet	4
Sidewalk Width Without Curb Inch	0
Comments	2" raised panel at hydrant. 30' of cracked panels. Water valve up 1"

Photo of Block



Photo



Poplar to Will st

Created	2015-05-20 19:24:17 UTC by Tablet App2
Updated	2015-05-20 23:10:01 UTC by Tablet App2
Location	39.8701716587319, -86.4650559705556
Status	■ Not Urgent

Identification

Segment	Poplar to Will st
Side	W
Date	2015-05-20
Surveyor	Jack
Street	Maple

Inspection Data

Sidewalk Cross Slope	less than 2%
Sidewalk Running Slope	0.2
Sidewalk Width Without Curb Feet	4
Sidewalk Width Without Curb Inch	0

Photo of Block



Photo



Scott to Poplar

Created	2015-05-20 19:11:06 UTC by Tablet App2
Updated	2015-05-20 23:10:07 UTC by Tablet App2
Location	39.8693907168134, -86.4652688708962
Status	■ Needed

Identification

Segment	Scott to Poplar
Side	E
Date	2015-05-20
Surveyor	Jack
Street	Maple
Nearby Facilities (Check if Yes)	School in 3 Blocks

Inspection Data

Sidewalk Cross Slope	less than 2%
Sidewalk Running Slope	0.3
Sidewalk Width Without Curb Feet	4
Sidewalk Width Without Curb Inch	0
Comments	4 raised panels 3/4" to 1.5". Casting in walk w 2" openings

Photo of Block



Photo



Scott to Poplar

Created	2015-05-20 19:09:31 UTC by Tablet App2
Updated	2015-05-20 22:53:18 UTC by Tablet App2
Location	39.8683447810261, -86.4657452982724
Status	■ Not Urgent

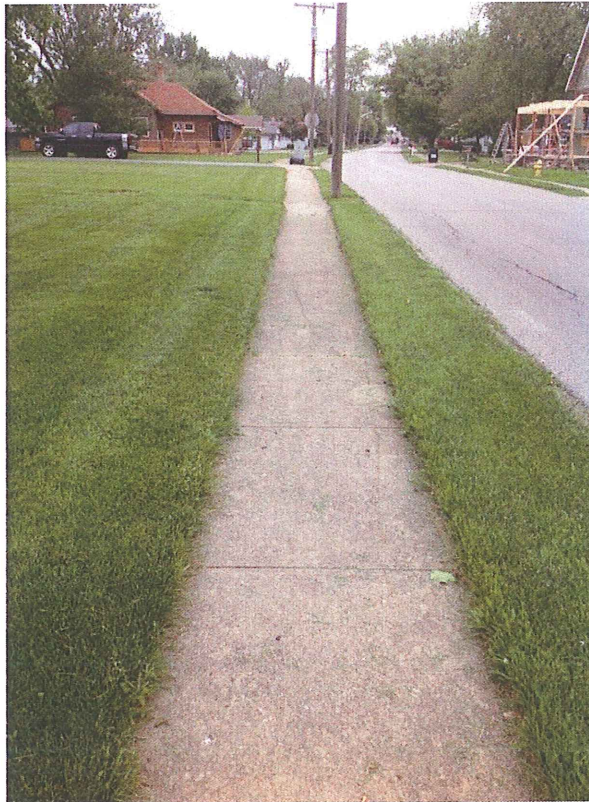
Identification

Segment	Scott to Poplar
Side	W
Date	2015-05-20
Surveyor	Jack
Street	Maple
Nearby Facilities (Check if Yes)	School in 3 Blocks

Inspection Data

Sidewalk Cross Slope	less than 2%
Sidewalk Running Slope	0.6
Sidewalk Width Without Curb Feet	5
Sidewalk Width Without Curb Inch	0
Comments	Rough driveway

Photo of Block



Photo



Lodge to Scott

Created	2015-05-20 18:54:26 UTC by Tablet App2
Updated	2015-05-20 23:01:33 UTC by Tablet App2
Location	39.8671840131654, -86.4660985954911
Status	■ Needed

Identification

Segment	Lodge to Scott
Side	W
Date	2015-05-20
Surveyor	Jack
Street	Maple

Inspection Data

Sidewalk Cross Slope	less than 2%
Sidewalk Running Slope	1.7
Sidewalk Accessibility Obstacles	Yes
Sidewalk Width Without Curb Inch	0
Comments	Running slope at RR 6%. Badly cracked areas

Photo of Block



Photo



Lodge to Scott

Created	2015-05-20 18:59:15 UTC by Tablet App2
Updated	2015-05-20 22:58:59 UTC by Tablet App2
Location	39.8661323357745, -86.4662783873141
Status	■ Needed

Identification

Segment	Lodge to Scott
Side	E
Date	2015-05-20
Surveyor	Jack
Street	Maple

Inspection Data

Sidewalk Cross Slope	less than 2%
Sidewalk Running Slope	0.8
Sidewalk Width Without Curb Inch	0
Comments	Cracked and uneven areas

Photo of Block



Photo



Lodge to church

Created	2015-05-20 18:39:40 UTC by Tablet App2
Updated	2015-05-20 22:52:20 UTC by Tablet App2
Location	39.8649960404325, -86.4666168216354
Status	■ Needed

Identification

Segment	Lodge to church
Side	E
Date	2015-05-20
Surveyor	Jack
Street	Maple
Nearby Facilities (Check if Yes)	School in 3 Blocks

Inspection Data

Sidewalk Cross Slope	less than 2%
Sidewalk Running Slope	0.4
Sidewalk Width Without Curb Feet	4
Sidewalk Width Without Curb Inch	0
Comments	Badly cracked areas and curb up 6" above walk

Photo of Block



Photo



Church to Lodge

Created	2015-05-20 18:35:12 UTC by Tablet App2
Updated	2015-05-20 22:51:44 UTC by Tablet App2
Location	39.8648776256278, -86.4666567712266
Status	■ Needed

Identification

Segment	Church to Lodge
Side	W
Date	2015-05-20
Surveyor	Jack
Street	Maple
Nearby Facilities (Check if Yes)	School in 3 Blocks

Inspection Data

Sidewalk Obstructions	Yes
Sidewalk Cross Slope	less than 2%
Sidewalk Running Slope	0.4
Sidewalk Width Without Curb Feet	4
Sidewalk Width Without Curb Inch	0
Comments	Running slope 10 % at alley for 3'

Photo of Block



Photo



Main to Church

Created	2015-05-20 18:43:24 UTC by Tablet App2
Updated	2015-05-20 22:45:49 UTC by Tablet App2
Location	39.8642994527701, -86.4668669042294
Status	■ Not Urgent

Identification

Segment	Main to Church
Side	E
Date	2015-05-20
Surveyor	Jack
Street	Maple
Nearby Facilities (Check if Yes)	School in 3 Blocks

Inspection Data

Sidewalk Cross Slope	less than 2%
Sidewalk Running Slope	0.2
Sidewalk Width Without Curb Feet	4
Sidewalk Width Without Curb Inch	6
Comments	7.5' at widest

Photo of Block



Main to Church

Created	2015-05-20 18:31:56 UTC by Tablet App2
Updated	2015-05-20 22:45:55 UTC by Tablet App2
Location	39.8643488662221, -86.4668471805635
Status	■ Not Urgent

Identification

Segment	Main to Church
Side	W
Date	2015-05-20
Surveyor	Jack
Street	Maple
Nearby Facilities (Check if Yes)	School in 3 Blocks

Inspection Data

Sidewalk Cross Slope	less than 2%
Sidewalk Running Slope	0.2
Sidewalk Width Without Curb Feet	4
Sidewalk Width Without Curb Inch	0

Photo of Block



Woodland to Deer tr ct

Created	2015-05-22 11:24:48 UTC by Tablet App2
Updated	2015-05-22 11:28:32 UTC by Tablet App2
Location	39.8677942642305, -86.4626015828981
Status	■ Not Urgent

Identification

Segment	Woodland to Deer tr ct
Side	Both
Date	2015-05-22
Surveyor	Jack
Street	Karen dr

Inspection Data

Sidewalk Cross Slope	less than 2%
Sidewalk Running Slope	1.9
Sidewalk Width Without Curb Feet	4
Sidewalk Width Without Curb Inch	0

Photo of Block



South of Woodland

Created	2015-05-22 11:20:35 UTC by Tablet App2
Updated	2015-05-22 11:20:35 UTC by Tablet App2
Location	39.8665637104212, -86.4608921763361
Status	■ Not Urgent

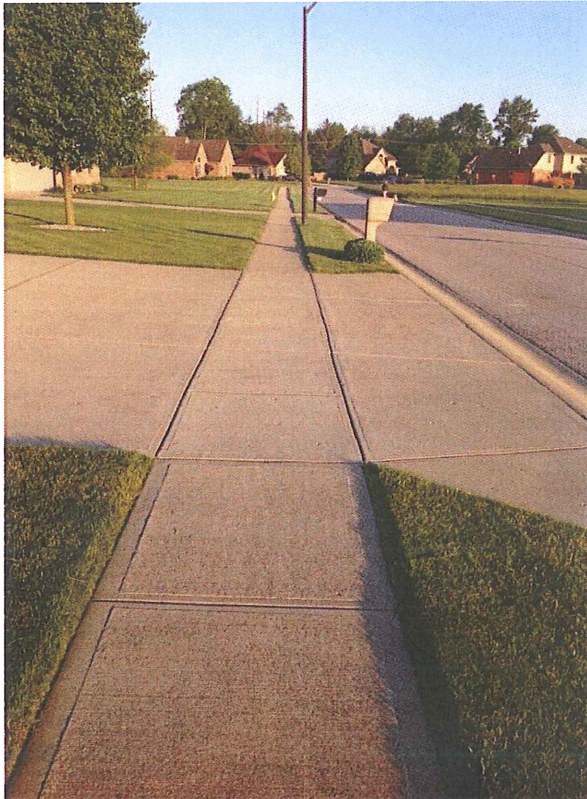
Identification

Segment	South of Woodland
Side	S
Date	2015-05-22
Surveyor	Jack
Street	Karen dr

Inspection Data

Sidewalk Cross Slope	less than 2%
Sidewalk Running Slope	0.2
Sidewalk Surface Discontinuities	Yes
Sidewalk Width Without Curb Feet	4
Sidewalk Width Without Curb Inch	0
Comments	2 empty lots

Photo of Block



South of Woodland

Created	2015-05-22 11:14:52 UTC by Tablet App2
Updated	2015-05-22 11:21:42 UTC by Tablet App2
Location	39.8663359214757, -86.4597225522266
Status	■ Not Urgent

Identification

Segment	South of Woodland
Side	N
Date	2015-05-22
Surveyor	Jack
Street	Karen dr

Inspection Data

Sidewalk Cross Slope	less than 2%
Sidewalk Running Slope	0.9
Sidewalk Surface Discontinuities	Yes
Sidewalk Width Without Curb Feet	4
Sidewalk Width Without Curb Inch	0
Comments	2 empty lots

Photo of Block



Created	2015-05-22 11:09:05 UTC by Tablet App2
Updated	2015-05-22 11:09:55 UTC by Tablet App2
Location	39.8665803904085, -86.459023431024
Status	■ Not Urgent

Identification

Side	Both
Date	2015-05-22
Surveyor	Jack
Street	Karen ct

Inspection Data

Sidewalk Cross Slope	less than 2%
Sidewalk Running Slope	0.9
Sidewalk Surface Discontinuities	Yes
Sidewalk Width Without Curb Feet	4
Sidewalk Width Without Curb Inch	0
Comments	1 raised panel 3/4". 1 empty lot no walk

Photo of Block



Karen to Edgewood

Created	2015-05-22 12:20:01 UTC by Tablet App2
Updated	2015-05-22 12:25:03 UTC by Tablet App2
Location	39.868012731932, -86.4603270684243
Status	■ Needed

Identification

Segment	Karen to Edgewood
Side	S
Date	2015-05-22
Surveyor	Jack
Street	Woodland pl

Inspection Data

Sidewalk Cross Slope	2 - 3%
Sidewalk Running Slope	1.6
Sidewalk Vertical Discontinuities	Yes
Sidewalk Width Without Curb Feet	4
Sidewalk Width Without Curb Inch	0
Comments	About half of area < 2%. 2 raised panels 1"

Photo of Block



Karen to Edgewood

Created	2015-05-22 12:06:36 UTC by Tablet App2
Updated	2015-05-22 12:23:13 UTC by Tablet App2
Location	39.8677557427807, -86.4610826131762
Status	■ Needed

Identification

Segment	Karen to Edgewood
Side	S
Date	2015-05-22
Surveyor	Jack
Street	Woodland pl

Inspection Data

Sidewalk Cross Slope	greater than 3%
Sidewalk Running Slope	1.6
Sidewalk Vertical Discontinuities	Yes
Sidewalk Width Without Curb Inch	0
Comments	Most of area < 2%. About 200' from curve to Edgewood 3 to 6% x slope 2 raised panels 3/4"

Photo of Block



Created	2015-05-22 13:05:36 UTC by Tablet App2
Updated	2015-05-22 13:12:22 UTC by Tablet App2
Location	39.869885810392, -86.4598432825733
Status	■ Not Urgent

Identification

Side	N
Date	2015-05-22
Surveyor	Jack
Street	Edgewood ct

Inspection Data

Sidewalk Cross Slope	less than 2%
Sidewalk Running Slope	0.6
Sidewalk Width Without Curb Feet	4
Sidewalk Width Without Curb Inch	0

Photo of Block



Created	2015-05-22 13:07:16 UTC by Tablet App2
Updated	2015-05-22 13:11:37 UTC by Tablet App2
Location	39.8696494401718, -86.461589439176
Status	■ Not Urgent

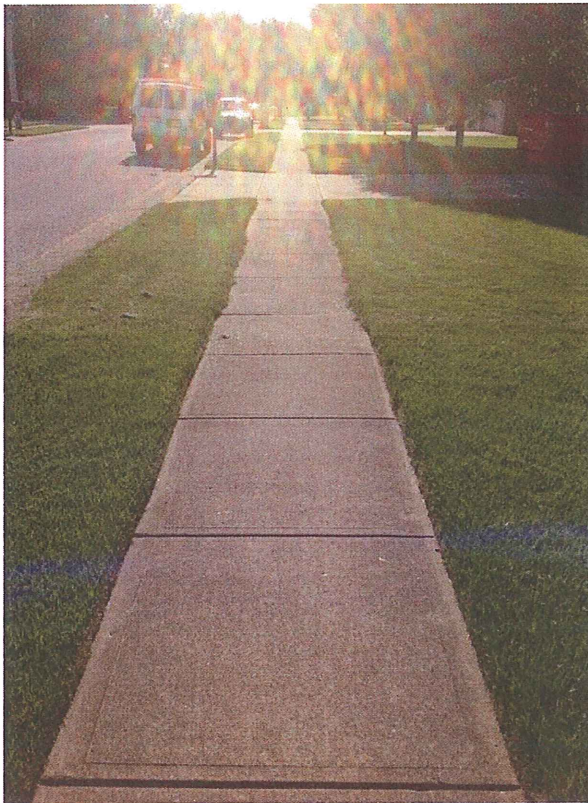
Identification

Side	S
Date	2015-05-22
Surveyor	Jack
Street	Edgewood ct

Inspection Data

Sidewalk Cross Slope	less than 2%
Sidewalk Running Slope	0.9
Sidewalk Vertical Discontinuities	Yes
Sidewalk Width Without Curb Feet	4
Sidewalk Width Without Curb Inch	0
Comments	2 raised panels 3/4"

Photo of Block



Edgewood to Wall

Created	2015-05-22 12:30:32 UTC by Tablet App2
Updated	2015-05-22 13:21:18 UTC by Tablet App2
Location	39.870465536902, -86.459160638442
Status	■ Not Urgent

Identification

Segment	Edgewood to Wall
Side	E
Date	2015-05-22
Surveyor	Jack
Street	Woodland pl

Inspection Data

Sidewalk Cross Slope	less than 2%
Sidewalk Running Slope	0.7
Sidewalk Vertical Discontinuities	Yes
Sidewalk Width Without Curb Feet	4
Sidewalk Width Without Curb Inch	0
Comments	3 raised panels 3/4"

Photo of Block



Edgewood to Wall

Created	2015-05-22 12:33:35 UTC by Tablet App2
Updated	2015-05-22 12:41:53 UTC by Tablet App2
Location	39.8715145653485, -86.4592780732424
Status	■ Not Urgent

Identification

Segment	Edgewood to Wall
Side	W
Date	2015-05-22
Surveyor	Jack
Street	Woodland pl

Inspection Data

Sidewalk Cross Slope	less than 2%
Sidewalk Running Slope	1.4
Sidewalk Vertical Discontinuities	Yes
Sidewalk Width Without Curb Feet	4
Sidewalk Width Without Curb Inch	0
Comments	4 raised panels 1"

Photo of Block



Created	2015-05-22 12:51:08 UTC by Tablet App2
Updated	2015-05-22 12:58:06 UTC by Tablet App2
Location	39.8687377246468, -86.4618969988883
Status	■ Not Urgent

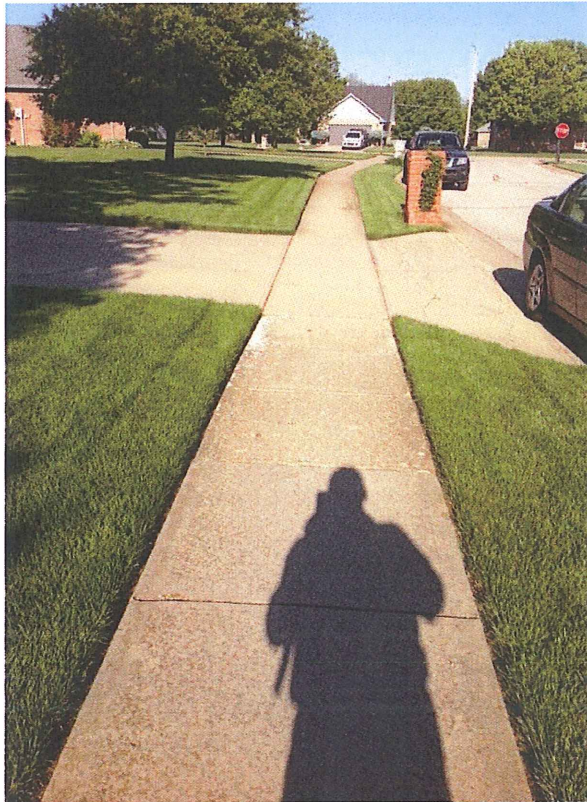
Identification

Side	N
Date	2015-05-22
Surveyor	Jack
Street	Deer Trace

Inspection Data

Sidewalk Cross Slope	less than 2%
Sidewalk Running Slope	0.7
Sidewalk Width Without Curb Feet	4
Sidewalk Width Without Curb Inch	0

Photo of Block



Created	2015-05-22 12:52:16 UTC by Tablet App2
Updated	2015-05-22 12:56:44 UTC by Tablet App2
Location	39.8685255235237, -86.4612527688496
Status	■ Not Urgent

Identification

Side	S
Date	2015-05-22
Surveyor	Jack
Street	Deer Trace

Inspection Data

Sidewalk Cross Slope	less than 2%
Sidewalk Running Slope	0.9
Sidewalk Vertical Discontinuities	Yes
Sidewalk Width Without Curb Feet	4
Sidewalk Width Without Curb Inch	0
Comments	2 raised panels 1"

Photo of Block



Feet trace to Fawn ct

Created	2015-05-22 11:40:57 UTC by Tablet App2
Updated	2015-05-22 11:47:01 UTC by Tablet App2
Location	39.8691500723733, -86.4625906851948
Status	■ Not Urgent

Identification

Segment	Feet trace to Fawn ct
Side	E
Date	2015-05-22
Surveyor	Jack

Inspection Data

Sidewalk Cross Slope	less than 2%
Sidewalk Running Slope	0.4
Sidewalk Width Without Curb Feet	4
Sidewalk Width Without Curb Inch	0
Comments	Valve box up 2"

Photo of Block



Photo



Created	2015-05-21 12:06:34 UTC by Tablet App2
Updated	2015-05-21 12:08:52 UTC by Tablet App2
Location	39.8698567263603, -86.4631582283619
Status	■ Needed

Identification

Side	N
Date	2015-05-21
Surveyor	Jack
Street	Meadows dr

Inspection Data

Sidewalk Cross Slope	greater than 3%
Sidewalk Running Slope	0.2
Sidewalk Passing Space	Yes
Sidewalk Width Without Curb Feet	4
Sidewalk Width Without Curb Inch	0

Photo of Block



Created	2015-05-21 12:23:02 UTC by Tablet App2
Updated	2015-05-21 12:23:02 UTC by Tablet App2
Location	39.8691787384822, -86.4637669176668
Status	■ Needed

Identification

Side	S
Date	2015-05-21
Surveyor	Jack
Street	Meadows dr

Inspection Data

Sidewalk Cross Slope	less than 2%
Sidewalk Running Slope	0.6
Sidewalk Width Without Curb Feet	4
Sidewalk Width Without Curb Inch	0
Comments	X slope 3-4% through drives

Photo of Block



Created	2015-05-21 12:12:03 UTC by Tablet App2
Updated	2015-05-21 12:12:03 UTC by Tablet App2
Location	39.8690183926745, -86.4640441072047
Status	■ Needed

Identification

Side	Both
Date	2015-05-21
Surveyor	Jack
Street	Meadows ct

Inspection Data

Sidewalk Cross Slope	2 - 3%
Sidewalk Running Slope	0.3
Sidewalk Width Without Curb Feet	4
Sidewalk Width Without Curb Inch	0

Photo of Block



Created	2015-05-21 12:13:16 UTC by Tablet App2
Updated	2015-05-21 12:15:02 UTC by Tablet App2
Location	39.8686039913817, -86.4639343880922
Status	■ Not Urgent

Identification

Side	Both
Date	2015-05-21
Surveyor	Jack
Street	Meadows dr

Inspection Data

Sidewalk Cross Slope	less than 2%
Sidewalk Running Slope	0.3
Sidewalk Width Without Curb Feet	4
Sidewalk Width Without Curb Inch	0

Photo of Block



Deer trace to Fawn ct

Created	2015-05-22 11:41:52 UTC by Tablet App2
Updated	2015-05-22 11:46:07 UTC by Tablet App2
Location	39.8703037994354, -86.4627264720262
Status	■ Not Urgent

Identification

Segment	Deer trace to Fawn ct
Side	W
Date	2015-05-22
Surveyor	Jack
Street	Karen dr

Inspection Data

Sidewalk Cross Slope	less than 2%
Sidewalk Running Slope	0.5
Sidewalk Vertical Discontinuities	Yes
Sidewalk Width Without Curb Feet	4
Sidewalk Width Without Curb Inch	0
Comments	2 raised panels 1"

Photo of Block



Created	2015-05-22 13:31:13 UTC by Tablet App2
Updated	2015-05-22 13:37:12 UTC by Tablet App2
Location	39.8708193283899, -86.4622984082312
Status	■ Not Urgent

Identification

Side	S
Date	2015-05-22
Surveyor	Jack
Street	Fawn ct

Inspection Data

Sidewalk Cross Slope	less than 2%
Sidewalk Running Slope	0.6
Sidewalk Vertical Discontinuities	Yes
Sidewalk Width Without Curb Feet	4
Sidewalk Width Without Curb Inch	0
Comments	2 raised panels 3/4"

Photo of Block



Created	2015-05-22 13:36:10 UTC by Tablet App2
Updated	2015-05-22 13:36:10 UTC by Tablet App2
Location	39.871008382216, -86.4611205831975
Status	■ Not Urgent

Identification

Side	N
Date	2015-05-22
Surveyor	Jack
Street	Fawn ct

Inspection Data

Sidewalk Cross Slope	less than 2%
Sidewalk Running Slope	0.7
Sidewalk Vertical Discontinuities	Yes
Sidewalk Width Without Curb Feet	4
Sidewalk Width Without Curb Inch	0
Comments	4 raised panels 1"

Photo of Block



Fawn to Wall st

Created	2015-05-22 11:52:14 UTC by Tablet App2
Updated	2015-05-22 11:56:13 UTC by Tablet App2
Location	39.8713010782747, -86.4626132325143
Status	■ Not Urgent

Identification

Segment	Fawn to Wall st
Side	E
Date	2015-05-22
Surveyor	Jack
Street	Karen dr

Inspection Data

Sidewalk Cross Slope	less than 2%
Sidewalk Running Slope	0.2
Sidewalk Width Without Curb Inch	0
Comments	1 raised panel 1"

Photo of Block



Fawn to Wall st

Created	2015-05-22 11:55:17 UTC by Tablet App2
Updated	2015-05-22 11:55:17 UTC by Tablet App2
Location	39.8715944029762, -86.4627915994138
Status	■ Not Urgent

Identification

Segment	Fawn to Wall st
Side	W
Date	2015-05-22
Surveyor	Jack
Street	Karen dr

Inspection Data

Sidewalk Cross Slope	less than 2%
Sidewalk Running Slope	0.2
Sidewalk Width Without Curb Feet	4
Sidewalk Width Without Curb Inch	0
Comments	1 raised panel 3/4"

Photo of Block



Karen to Woodland pl

Created	2015-05-21 17:07:37 UTC by Tablet App2
Updated	2015-05-21 17:09:26 UTC by Tablet App2
Location	39.8719554953648, -86.4622695744843
Status	■ Needed

Identification

Segment	Karen to Woodland pl
Side	S
Date	2015-05-21
Surveyor	Jack
Street	Wall

Inspection Data

Sidewalk Obstructions	Yes
Sidewalk Cross Slope	less than 2%
Sidewalk Running Slope	0.5
Sidewalk Passing Space	Yes
Sidewalk Width Without Curb Feet	4
Sidewalk Width Without Curb Inch	0
Comments	Valve box up 1". 4 raised panels 3/4"

Photo of Block



Photo



Poplar to Maple

Created	2015-05-21 16:51:49 UTC by Tablet App2
Updated	2015-05-21 17:00:19 UTC by Tablet App2
Location	39.8719391506537, -86.4661684167445
Status	■ Needed

Identification

Segment	Poplar to Maple
Side	S
Date	2015-05-21
Surveyor	Jack

Inspection Data

Sidewalk Cross Slope	less than 2%
Sidewalk Running Slope	0.4
Sidewalk Width Without Curb Feet	4
Sidewalk Width Without Curb Inch	0
Comments	Water v box up 2" 3 raised panels 3/4"

Photo of Block



Photo



Meridian to Poplar

Created	2015-05-21 16:45:58 UTC by Tablet App2
Updated	2015-05-21 16:45:58 UTC by Tablet App2
Location	39.8718953971191, -86.4678045642436
Status	■ Needed

Identification

Segment	Meridian to Poplar
Side	S
Date	2015-05-21
Surveyor	Jack
Street	Wall

Inspection Data

Sidewalk Obstructions	Yes
Sidewalk Cross Slope	less than 2%
Sidewalk Running Slope	0.2
Sidewalk Width Without Curb Feet	4
Sidewalk Width Without Curb Inch	0

Comments Walk settlement 1" at Meridian st and 1.5" gap away from curb. Casting w 2" openings

Photo of Block



Photo





Created	2015-05-21 11:29:17 UTC by Tablet App2
Updated	2015-05-21 11:33:56 UTC by Tablet App2
Location	39.8699139990284, -86.4678882994563
Status	■ Needed

Identification

Side	E
Date	2015-05-21
Surveyor	Jack
Street	Meridian

Inspection Data

Sidewalk Cross Slope	2 - 3%
Sidewalk Running Slope	2.5
Sidewalk Width Without Curb Feet	5
Sidewalk Width Without Curb Inch	0
Comments	Mailboxes Gap at curb 1" in spots. Water valve boxes up 1.5"

Photo of Block



Photo





Created	2015-05-21 11:25:10 UTC by Tablet App2
Updated	2015-05-21 11:27:10 UTC by Tablet App2
Location	39.8692594981192, -86.4679881279231
Status	■ Needed

Identification

Side	W
Date	2015-05-21
Surveyor	Jack
Street	Meridian

Inspection Data

Sidewalk Cross Slope	2 - 3%
Sidewalk Running Slope	3
Sidewalk Width Without Curb Feet	5
Sidewalk Width Without Curb Inch	0
Comments	1" gap in spots between curb. About half of block is < 2% x slope

Photo of Block



Photo



Created	2015-05-21 11:14:05 UTC by Tablet App2
Updated	2015-05-21 11:20:56 UTC by Tablet App2
Location	39.8675948521494, -86.4679576177955
Status	■ Needed

Identification

Side	Both
Date	2015-05-21
Surveyor	Jack
Street	Meridian

Inspection Data

Sidewalk Cross Slope	greater than 3%
Sidewalk Running Slope	1.4
Sidewalk Vertical Discontinuities	Yes
Sidewalk Width Without Curb Feet	5
Sidewalk Width Without Curb Inch	0
Comments	1" trip hazard at tracks. Both sides of street

Photo of Block



Created	2015-05-21 11:12:13 UTC by Tablet App2
Updated	2015-05-21 14:31:17 UTC by Tablet App2
Location	39.8673224822058, -86.4682915528179
Status	■ Needed

Identification

Side	S
Date	2015-05-21
Surveyor	Jack
Street	Sterling

Inspection Data

Sidewalk Cross Slope	greater than 3%
Sidewalk Running Slope	0.5
Sidewalk Width Without Curb Feet	4
Sidewalk Width Without Curb Inch	0
Comments	Slope 5% through driveway Sterling dr is private drive

Photo of Block



Created	2015-05-21 11:10:21 UTC by Tablet App2
Updated	2015-05-21 14:30:43 UTC by Tablet App2
Location	39.8673845921083, -86.4683919680179
Status	■ Needed

Identification

Side	N
Date	2015-05-21
Surveyor	Jack
Street	Sterling

Inspection Data

Sidewalk Cross Slope	greater than 3%
Sidewalk Running Slope	0.6
Sidewalk Width Without Curb Feet	2
Sidewalk Width Without Curb Inch	0
Comments	Sterling dr is a private entrance for apartments

Photo of Block



Sterling to Lodge

Created	2015-05-20 18:17:09 UTC by Tablet App2
Updated	2015-05-20 22:34:46 UTC by Tablet App2
Location	39.8669195222108, -86.4678800013722
Status	■ Needed

Identification

Segment	Sterling to Lodge
Side	E
Date	2015-05-20
Surveyor	Jack
Street	Meridian
Nearby Facilities (Check if Yes)	School in 3 Blocks

Inspection Data

Sidewalk Cross Slope	2 - 3%
Sidewalk Running Slope	0.4
Sidewalk Width Without Curb Feet	5
Sidewalk Width Without Curb Inch	0

Photo of Block



Lodge to Sterling

Created	2015-05-20 18:15:29 UTC by Tablet App2
Updated	2015-05-20 22:33:17 UTC by Tablet App2
Location	39.8661149014159, -86.4679811709434
Status	■ Needed

Identification

Segment	Lodge to Sterling
Side	W
Date	2015-05-20
Surveyor	Jack
Street	Meridian
Nearby Facilities (Check if Yes)	School in 3 Blocks

Inspection Data

Sidewalk Cross Slope	2 - 3%
Sidewalk Running Slope	0.4
Sidewalk Width Without Curb Feet	5
Sidewalk Width Without Curb Inch	0

Photo of Block



Lodge to Church

Created	2015-05-20 18:20:04 UTC by Tablet App2
Updated	2015-05-20 22:36:24 UTC by Tablet App2
Location	39.8652222706376, -86.4678364154757
Status	■ Needed

Identification

Segment	Lodge to Church
Side	E
Date	2015-05-20
Surveyor	Jack
Street	Meridian
Nearby Facilities (Check if Yes)	School in 3 Blocks

Inspection Data

Sidewalk Obstructions	Yes
Sidewalk Cross Slope	2 - 3%
Sidewalk Running Slope	0.4
Sidewalk Width Without Curb Inch	0
Comments	Walk settlement 2" below curb

Photo of Block



Photo



Osborne to Lodge

Created	2015-05-20 18:13:12 UTC by Tablet App2
Updated	2015-05-20 22:32:04 UTC by Tablet App2
Location	39.8651679139956, -86.4679163788319
Status	■ Needed

Identification

Segment	Osborne to Lodge
Side	W
Date	2015-05-20
Surveyor	Jack
Street	Meridian
Nearby Facilities (Check if Yes)	School in 3 Blocks

Inspection Data

Sidewalk Cross Slope	less than 2%
Sidewalk Running Slope	0.2
Sidewalk Width Without Curb Feet	5
Sidewalk Width Without Curb Inch	0

Photo of Block



Meridian to McCord

Created	2015-05-20 17:42:41 UTC by Tablet App2
Updated	2015-05-20 22:18:31 UTC by Tablet App2
Location	39.8651584843545, -86.4682384115518
Status	■ Not Urgent

Identification

Segment	Meridian to McCord
Side	N
Date	2015-05-20
Surveyor	Jack
Street	Osborne
Nearby Facilities (Check if Yes)	School in 3 Blocks

Inspection Data

Sidewalk Cross Slope	less than 2%
Sidewalk Running Slope	0.6
Sidewalk Width Without Curb Feet	3
Sidewalk Width Without Curb Inch	6

Photo of Block



McCord to Meridian

Created	2015-05-20 18:00:40 UTC by Tablet App2
Updated	2015-05-20 22:25:57 UTC by Tablet App2
Location	39.8651416367291, -86.4687346202195
Status	■ Not Urgent

Identification

Segment	McCord to Meridian
Side	S
Date	2015-05-20
Surveyor	Jack
Street	Osborne
Nearby Facilities (Check if Yes)	School in 3 Blocks

Inspection Data

Sidewalk Cross Slope	less than 2%
Sidewalk Running Slope	0.3
Sidewalk Width Without Curb Feet	3
Sidewalk Width Without Curb Inch	6

Photo of Block



McCord to Sparks

Created	2015-05-20 17:45:03 UTC by Tablet App2
Updated	2015-05-20 22:18:56 UTC by Tablet App2
Location	39.8653141782059, -86.4691626001955
Status	■ Needed

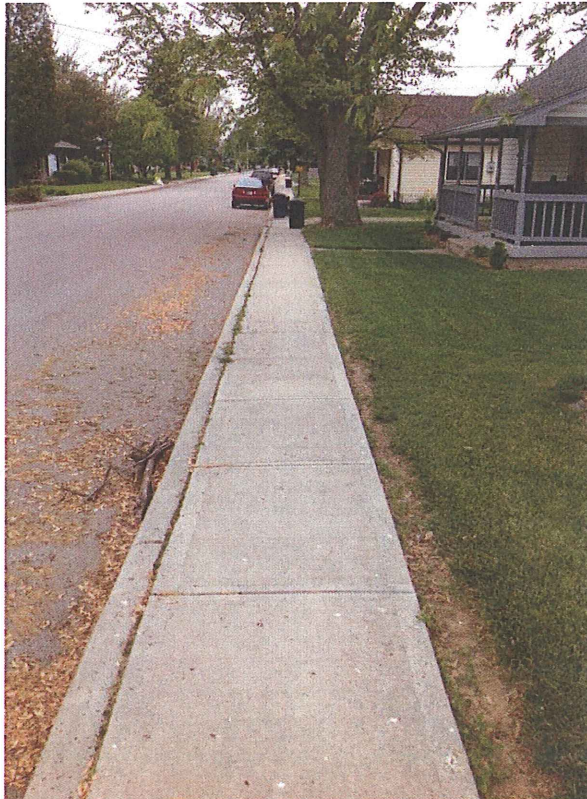
Identification

Segment	McCord to Sparks
Side	N
Date	2015-05-20
Surveyor	Jack
Street	Osborne

Inspection Data

Sidewalk Cross Slope	greater than 3%
Sidewalk Running Slope	0.4
Sidewalk Passing Space	Yes
Sidewalk Width Without Curb Feet	3
Sidewalk Width Without Curb Inch	6
Comments	Some areas < 2%

Photo of Block



Sparks to McCord

Created	2015-05-20 17:58:56 UTC by Tablet App2
Updated	2015-05-20 22:24:48 UTC by Tablet App2
Location	39.8654349614306, -86.4697212540419
Status	■ Not Urgent

Identification

Segment	Sparks to McCord
Side	S
Date	2015-05-20
Surveyor	Jack
Street	Osborne
Nearby Facilities (Check if Yes)	School in 3 Blocks

Inspection Data

Sidewalk Cross Slope	less than 2%
Sidewalk Running Slope	0.7
Sidewalk Width Without Curb Feet	3
Sidewalk Width Without Curb Inch	6

Photo of Block



Sparks to Fisher

Created	2015-05-20 17:48:54 UTC by Tablet App2
Updated	2015-05-20 22:20:48 UTC by Tablet App2
Location	39.8656788748129, -86.4704674110622
Status	■ Not Urgent

Identification

Segment	Sparks to Fisher
Side	N
Date	2015-05-20
Surveyor	Jack
Street	Osborne
Nearby Facilities (Check if Yes)	School in 3 Blocks

Inspection Data

Sidewalk Cross Slope	less than 2%
Sidewalk Running Slope	0.3
Sidewalk Width Without Curb Feet	3
Sidewalk Width Without Curb Inch	6

Photo of Block



Fisher to Sparks

Created	2015-05-20 17:56:36 UTC by Tablet App2
Updated	2015-05-20 22:23:42 UTC by Tablet App2
Location	39.8656787071748, -86.4707521443129
Status	■ Needed

Identification

Segment	Fisher to Sparks
Side	S
Date	2015-05-20
Surveyor	Jack
Street	Osborne
Nearby Facilities (Check if Yes)	School in 3 Blocks

Inspection Data

Sidewalk Obstructions	Yes
Sidewalk Cross Slope	greater than 3%
Sidewalk Running Slope	0.6
Sidewalk Width Without Curb Feet	3
Sidewalk Width Without Curb Inch	6
Comments	Mailboxes

Photo of Block



Fisher to Hamilton

Created	2015-05-20 17:50:59 UTC by Tablet App2
Updated	2015-05-20 22:21:09 UTC by Tablet App2
Location	39.8659518733992, -86.4712263923944
Status	■ Not Urgent

Identification

Segment	Fisher to Hamilton
Side	N
Date	2015-05-20
Surveyor	Jack
Street	Osborne
Nearby Facilities (Check if Yes)	School in 3 Blocks

Inspection Data

Sidewalk Cross Slope	less than 2%
Sidewalk Running Slope	0.4
Sidewalk Width Without Curb Feet	3
Sidewalk Width Without Curb Inch	6

Photo of Block



Photo



Hamilton to Fisher

Created	2015-05-20 17:54:41 UTC by Tablet App2
Updated	2015-05-20 22:23:21 UTC by Tablet App2
Location	39.8659141129254, -86.471883365965
Status	■ Not Urgent

Identification

Segment	Hamilton to Fisher
Side	S
Date	2015-05-20
Surveyor	Jack
Street	Osborne
Nearby Facilities (Check if Yes)	School in 3 Blocks

Inspection Data

Sidewalk Obstructions	Yes
Sidewalk Cross Slope	less than 2%
Sidewalk Running Slope	0.3
Sidewalk Width Without Curb Feet	3
Sidewalk Width Without Curb Inch	6
Comments	Mailboxes

Photo of Block



Scamahorn to Hamilton

Created	2015-05-20 17:53:37 UTC by Tablet App2
Updated	2015-05-20 22:22:55 UTC by Tablet App2
Location	39.8660120135545, -86.4722081647129
Status	■ Not Urgent

Identification

Segment	Scamahorn to Hamilton
Side	S
Date	2015-05-20
Surveyor	Jack
Street	Osborne
Nearby Facilities (Check if Yes)	School in 3 Blocks

Inspection Data

Sidewalk Cross Slope	less than 2%
Sidewalk Running Slope	0.5
Sidewalk Width Without Curb Feet	3
Sidewalk Width Without Curb Inch	6

Photo of Block



Scamahorn to Hamilton

Created	2015-05-20 17:53:08 UTC by Tablet App2
Updated	2015-05-20 22:21:40 UTC by Tablet App2
Location	39.866075674109, -86.4721984417052
Status	■ Not Urgent

Identification

Segment	Scamahorn to Hamilton
Side	N
Date	2015-05-20
Surveyor	Jack
Street	Osborne
Nearby Facilities (Check if Yes)	School in 3 Blocks

Inspection Data

Sidewalk Cross Slope	less than 2%
Sidewalk Running Slope	0.5
Sidewalk Width Without Curb Feet	3
Sidewalk Width Without Curb Inch	6

Photo of Block



Main to Osborne

Created	2015-05-20 18:10:32 UTC by Tablet App2
Updated	2015-05-20 22:30:58 UTC by Tablet App2
Location	39.8646661732717, -86.4680402633608
Status	■ Not Urgent

Identification

Segment	Main to Osborne
Side	W
Date	2015-05-20
Surveyor	Jack
Street	Meridian
Nearby Facilities (Check if Yes)	School in 3 Blocks

Inspection Data

Sidewalk Cross Slope	2 - 3%
Sidewalk Running Slope	0.5
Sidewalk Width Without Curb Feet	5
Sidewalk Width Without Curb Inch	0
Comments	Sidewalk settlement 1" below curb

Photo of Block



Photo



Church to Main

Created	2015-05-20 18:22:19 UTC by Tablet App2
Updated	2015-05-20 22:37:33 UTC by Tablet App2
Location	39.8645805102213, -86.4679365792186
Status	■ Not Urgent

Identification

Segment	Church to Main
Side	E
Date	2015-05-20
Surveyor	Jack
Street	Meridian
Nearby Facilities (Check if Yes)	School in 3 Blocks

Inspection Data

Sidewalk Cross Slope	less than 2%
Sidewalk Running Slope	0.2
Sidewalk Width Without Curb Feet	5
Sidewalk Width Without Curb Inch	0

Photo of Block



Olsen to Main st

Created	2015-05-20 15:38:35 UTC by Tablet App2
Updated	2015-05-20 15:47:40 UTC by Tablet App2
Location	39.8635359155385, -86.4673247841061
Status	■ Needed

Identification

Segment	Olsen to Main st
Side	W
Date	2015-05-20
Surveyor	Jack
Street	Maple

Inspection Data

Sidewalk Cross Slope	greater than 3%
Sidewalk Running Slope	1.3
Sidewalk Width Without Curb Inch	0
Comments	Half of block is < 2%. Badly cracked in areas

Photo of Block



Photo



Olsen to Main

Created	2015-05-20 15:39:07 UTC by Tablet App2
Updated	2015-05-20 15:44:27 UTC by Tablet App2
Location	39.8634771164878, -86.4671260491819
Status	■ Not Urgent

Identification

Segment	Olsen to Main
Side	E
Date	2015-05-20
Surveyor	Jack
Street	Maple st

Inspection Data

Sidewalk Cross Slope	less than 2%
Sidewalk Running Slope	1.4
Sidewalk Width Without Curb Feet	7
Sidewalk Width Without Curb Inch	6
Comments	Few cracked areas

Photo of Block



Woodridge to Olsen st

Created	2015-05-20 15:11:01 UTC by Tablet App2
Updated	2015-05-20 15:19:58 UTC by Tablet App2
Location	39.8612740589677, -86.4678254351825
Status	■ Needed

Identification

Segment	Woodridge to Olsen st
Side	E
Date	2015-05-20
Surveyor	Jack
Street	Maple st

Inspection Data

Sidewalk Cross Slope	less than 2%
Sidewalk Running Slope	0.8
Sidewalk Passing Space	Yes
Sidewalk Vertical Discontinuities	Yes
Sidewalk Width Without Curb Feet	4
Sidewalk Width Without Curb Inch	0
Comments	< 100' cracked and 2-3% x slope. Width 4 to 5'. 2 raised panels 3/4"

Photo of Block



Woodridge dr to Olsen st

Created	2015-05-20 15:01:57 UTC by Tablet App2
Updated	2015-05-20 15:19:23 UTC by Tablet App2
Location	39.8606638145073, -86.4681833424479
Status	■ Needed

Identification

Segment	Woodridge dr to Olsen st
Side	W
Date	2015-05-20
Surveyor	Jack
Street	Maple

Inspection Data

Sidewalk Cross Slope	less than 2%
Sidewalk Running Slope	0.7
Sidewalk Passing Space	Yes
Sidewalk Surface Discontinuities	No
Sidewalk Width Without Curb Feet	4
Sidewalk Width Without Curb Inch	0
Comments	30' area at tree 5% x slope. Width is 4' to 5'

Photo of Block



Photo



West end of sub

Created	2015-05-20 14:25:27 UTC by Tablet App2
Updated	2015-05-20 14:31:40 UTC by Tablet App2
Location	39.8599368101357, -86.467525530687
Status	■ Not Urgent

Identification

Segment	West end of sub
Side	Both
Date	2015-05-20
Surveyor	Jack
Street	So / no Woodridge dr

Inspection Data

Sidewalk Cross Slope	less than 2%
Sidewalk Running Slope	0.6
Sidewalk Passing Space	Yes
Sidewalk Vertical Discontinuities	Yes
Sidewalk Width Without Curb Inch	0
Comments	1 raised panel 3/4"

Photo of Block



NE corner of sub

Created	2015-05-20 14:43:57 UTC by Tablet App2
Updated	2015-05-20 14:50:06 UTC by Tablet App2
Location	39.8604055680706, -86.4652724751145
Status	■ Needed

Identification

Segment	NE corner of sub
Side	Both
Date	2015-05-20
Surveyor	Jack
Street	N. Woodridge dr

Inspection Data

Sidewalk Cross Slope	less than 2%
Sidewalk Running Slope	0.4
Sidewalk Passing Space	Yes
Sidewalk Surface Discontinuities	Yes
Sidewalk Width Without Curb Feet	4
Sidewalk Width Without Curb Inch	0
Comments	X slope 8.2 through 1 driveway

Photo of Block



Photo



SE section of sub

Created	2015-05-20 14:49:47 UTC by Tablet App2
Updated	2015-05-20 14:49:47 UTC by Tablet App2
Location	39.8595475193846, -86.465313736262
Status	■ Not Urgent

Identification

Segment	SE section of sub
Side	Both
Date	2015-05-20
Surveyor	Jack
Street	S. Woodridge

Inspection Data

Sidewalk Cross Slope	less than 2%
Sidewalk Running Slope	0.4
Sidewalk Passing Space	Yes
Sidewalk Surface Discontinuities	Yes
Sidewalk Width Without Curb Feet	4
Sidewalk Width Without Curb Inch	0
Comments	2 raised panels 1"

Photo of Block



Stamford dr to Main st

Created	2015-05-15 15:48:41 UTC by Tablet App2
Updated	2015-05-15 16:01:26 UTC by Tablet App2
Location	39.8604434123634, -86.4623186924369
Status	■ Not Urgent

Identification

Segment	Stamford dr to Main st
Side	E
Date	2015-05-15
Surveyor	Jack
Street	Burlington Pkwy

Inspection Data

Sidewalk Cross Slope	less than 2%
Sidewalk Running Slope	1
Sidewalk Surface Discontinuities	Yes
Sidewalk Vertical Discontinuities	Yes
Sidewalk Width Without Curb Feet	4
Sidewalk Width Without Curb Inch	0
Comments	3 raised panels 3/4". Walks ends at pond

Photo of Block



Stamford dr to Main st

Created	2015-05-15 15:52:03 UTC by Tablet App2
Updated	2015-05-15 16:01:16 UTC by Tablet App2
Location	39.8598311143367, -86.4625994023741
Status	■ Not Urgent

Identification

Segment	Stamford dr to Main st
Side	W
Date	2015-05-15
Surveyor	Jack
Street	Burlington Pkwy

Inspection Data

Sidewalk Cross Slope	less than 2%
Sidewalk Running Slope	0.7
Sidewalk Passing Space	Yes
Sidewalk Surface Discontinuities	No
Sidewalk Vertical Discontinuities	Yes
Sidewalk Width Without Curb Inch	0
Comments	2 raised panels 3/4"

Photo of Block



East end of loop

Created	2015-05-14 19:56:42 UTC by Tablet App2
Updated	2015-05-14 19:56:42 UTC by Tablet App2
Location	39.8584451666473, -86.4625086263627
Status	■ Not Urgent

Identification

Segment	East end of loop
Side	Both
Date	2015-05-14
Surveyor	Jack
Street	Burlington pkwy

Inspection Data

Sidewalk Cross Slope	less than 2%
Sidewalk Surface Discontinuities	Yes
Sidewalk Width Without Curb Inch	0
Comments	No walk on east side

Photo of Block



Created	2015-05-14 20:02:13 UTC by Tablet App2
Updated	2015-05-18 12:57:11 UTC by Tablet App2
Location	39.8576863529532, -86.4626831375868
Status	■ Not Urgent

Identification

Side	Both
Date	2015-05-14
Surveyor	Jack
Street	Warrington ct

Inspection Data

Sidewalk Cross Slope	less than 2%
Sidewalk Running Slope	1.3
Sidewalk Vertical Discontinuities	Yes
Sidewalk Width Without Curb Inch	0
Comments	1 raised panel. 1"

Photo of Block



Created	2015-05-14 20:08:49 UTC by Tablet App2
Updated	2015-05-14 20:16:07 UTC by Tablet App2
Location	39.8576739477365, -86.4637843520254
Status	■ Not Urgent

Identification

Side	S
Surveyor	Jack
Street	Warrington

Inspection Data

Sidewalk Cross Slope	less than 2%
Sidewalk Running Slope	0.7
Sidewalk Passing Space	Yes
Sidewalk Width Without Curb Inch	0

Photo of Block



Created	2015-05-14 20:15:22 UTC by Tablet App2
Updated	2015-05-14 20:15:22 UTC by Tablet App2
Location	39.8577526118978, -86.4656450507105
Status	■ Not Urgent

Identification

Side	N
Surveyor	Jack
Street	Warrington

Inspection Data

Sidewalk Cross Slope	less than 2%
Sidewalk Running Slope	0.8
Sidewalk Passing Space	Yes
Sidewalk Vertical Discontinuities	Yes
Sidewalk Width Without Curb Inch	0
Comments	2 lots w no walks

Photo of Block



Created	2015-05-14 19:43:36 UTC by Tablet App2
Updated	2015-05-14 19:54:41 UTC by Tablet App2
Location	39.8586951988189, -86.466608382842
Status	■ Not Urgent

Identification

Side	N
Date	2015-05-14
Surveyor	Jack
Street	Stamford

Inspection Data

Sidewalk Cross Slope	less than 2%
Sidewalk Running Slope	1.3
Sidewalk Passing Space	Yes
Sidewalk Width Without Curb Inch	0
Comments	Few areas < 200' over 2%

Photo of Block



Created	2015-05-14 19:54:01 UTC by Tablet App2
Updated	2015-05-18 15:52:15 UTC by Tablet App2
Location	39.8585220706089, -86.466053417033
Status	■ Not Urgent

Identification

Side	S
Date	2015-05-14
Surveyor	Jack
Street	Stamford dr

Inspection Data

Sidewalk Cross Slope	less than 2%
Sidewalk Running Slope	1
Sidewalk Passing Space	Yes
Sidewalk Surface Discontinuities	Yes
Sidewalk Width Without Curb Inch	0
Comments	7 lots w no walks

Photo of Block



Noyes to Main

Created	2015-05-21 12:57:38 UTC by Tablet App2
Updated	2015-05-21 12:57:38 UTC by Tablet App2
Location	39.859784175679, -86.460096482268
Status	■ Not Urgent

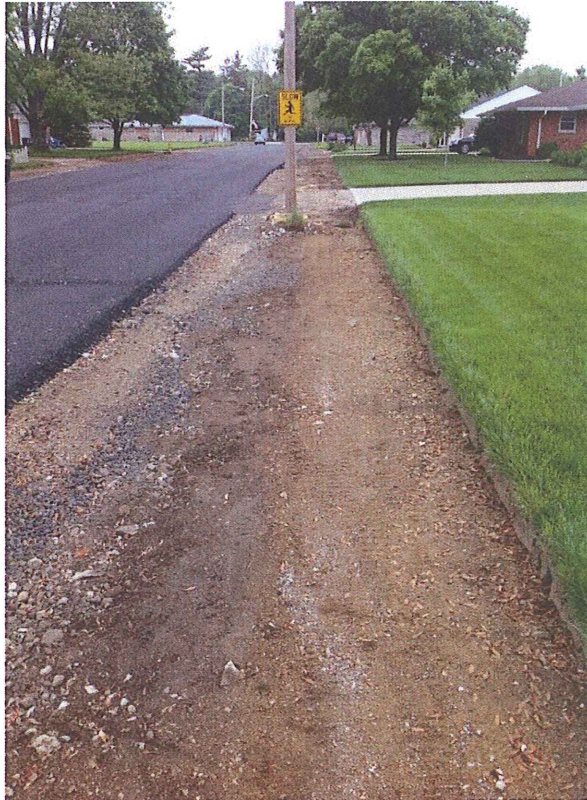
Identification

Segment	Noyes to Main
Side	Both
Date	2015-05-21
Surveyor	Jack
Street	Walnut

Inspection Data

Sidewalk Width Without Curb Inch	0
Comments	Both sides under construction. Walk removed

Photo of Block



South of Noyes

Created	2015-05-21 13:03:51 UTC by Tablet App2
Updated	2015-05-21 13:07:06 UTC by Tablet App2
Location	39.8589066742359, -86.460130764252
Status	■ Needed

Identification

Segment	South of Noyes
Side	W
Date	2015-05-21
Surveyor	Jack
Street	Walnut

Inspection Data

Sidewalk Cross Slope	2 - 3%
Sidewalk Running Slope	0.3
Sidewalk Passing Space	Yes
Sidewalk Width Without Curb Feet	4
Sidewalk Width Without Curb Inch	0
Comments	About half of block is < 2% x slope

Photo of Block



South of Noyes

Created	2015-05-21 13:34:27 UTC by Tablet App2
Updated	2015-05-21 13:34:27 UTC by Tablet App2
Location	39.8589210911094, -86.4587945212484
Status	■ Not Urgent

Identification

Segment	South of Noyes
Side	E
Date	2015-05-21
Surveyor	Jack
Street	Smith

Inspection Data

Sidewalk Cross Slope	less than 2%
Sidewalk Running Slope	0.3
Sidewalk Width Without Curb Feet	4
Sidewalk Width Without Curb Inch	0
Comments	40' spalled. Rest of block good condition

Photo of Block



South of Noyes

Created	2015-05-21 13:21:11 UTC by Tablet App2
Updated	2015-05-21 13:24:22 UTC by Tablet App2
Location	39.8577581858634, -86.4588801842988
Status	■ Not Urgent

Identification

Segment	South of Noyes
Side	W
Date	2015-05-21
Surveyor	Jack
Street	Smith

Inspection Data

Sidewalk Cross Slope	less than 2%
Sidewalk Running Slope	0.2
Sidewalk Passing Space	Yes
Sidewalk Width Without Curb Feet	4
Sidewalk Width Without Curb Inch	0
Comments	1 raised panel 1"

Photo of Block



South of Noyes

Created	2015-05-21 13:11:28 UTC by Tablet App2
Updated	2015-05-21 13:11:28 UTC by Tablet App2
Location	39.8579680268093, -86.4599949774206
Status	■ Needed

Identification

Segment	South of Noyes
Side	E
Date	2015-05-21
Surveyor	Jack
Street	Walnut

Inspection Data

Sidewalk Cross Slope	less than 2%
Sidewalk Running Slope	0.2
Sidewalk Width Without Curb Feet	4
Sidewalk Width Without Curb Inch	0
Comments	20' at tree raised 4% x slope. 4 raised panels 3/4"

Photo of Block



Noyes to Main

Created	2015-05-21 13:27:12 UTC by Tablet App2
Updated	2015-05-21 13:27:12 UTC by Tablet App2
Location	39.85944994729, -86.4589754027188
Status	■ Needed

Identification

Segment	Noyes to Main
Side	W
Date	2015-05-21
Surveyor	Jack
Street	Smith

Inspection Data

Sidewalk Cross Slope	less than 2%
Sidewalk Running Slope	0.2
Sidewalk Width Without Curb Feet	4
Sidewalk Width Without Curb Inch	0
Comments	80' spalled badly

Photo of Block



Noyes to Main

Created	2015-05-21 13:30:32 UTC by Tablet App2
Updated	2015-05-21 13:30:32 UTC by Tablet App2
Location	39.8601406161113, -86.4588386100591
Status	■ Needed

Identification

Segment	Noyes to Main
Side	E
Date	2015-05-21
Surveyor	Jack
Street	Smith

Inspection Data

Sidewalk Cross Slope	less than 2%
Sidewalk Running Slope	0.1
Sidewalk Passing Space	Yes
Sidewalk Vertical Discontinuities	Yes
Sidewalk Width Without Curb Feet	4
Sidewalk Width Without Curb Inch	0
Comments	1 raised panel 2". 6" curb next to walk at Main st

Photo of Block



Photo



So of broadmoor bend

Created	2015-05-13 16:20:49 UTC by Tablet App2
Updated	2015-05-13 16:20:49 UTC by Tablet App2
Location	39.861268401183, -86.4577253256798
Status	■ Needed

Identification

Segment	So of broadmoor bend
Side	Both
Date	2015-05-13
Surveyor	Jack
Street	Brooks way

Inspection Data

Sidewalk Cross Slope	greater than 3%
Sidewalk Running Slope	1.4
Sidewalk Passing Space	Yes
Sidewalk Vertical Discontinuities	Yes
Sidewalk Width Without Curb Inch	0
Comments	1 raised panel 1"

Photo of Block



Brooks way to Lasalle In

Created	2015-05-13 15:45:32 UTC by Tablet App2
Updated	2015-05-13 15:45:32 UTC by Tablet App2
Location	39.8614478158204, -86.4571586252064
Status	■ Needed

Identification

Segment	Brooks way to Lasalle In
Side	S
Date	2015-05-13
Surveyor	Jack
Street	Broadmoor bend

Inspection Data

Sidewalk Cross Slope	greater than 3%
Sidewalk Running Slope	0.8
Sidewalk Passing Space	Yes
Sidewalk Width Without Curb Inch	0

Photo of Block



Lasalle to brooks way

Created	2015-05-13 15:41:06 UTC by Tablet App2
Updated	2015-05-13 16:44:53 UTC by Tablet App2
Location	39.8614258971436, -86.4565469139129
Status	■ Needed

Identification

Segment	Lasalle to brooks way
Side	N
Date	2015-05-13
Surveyor	Jack
Street	Broadmoor bend

Inspection Data

Sidewalk Obstructions	Yes
Sidewalk Cross Slope	greater than 3%
Sidewalk Running Slope	2
Sidewalk Passing Space	Yes
Sidewalk Width Without Curb Inch	0
Comments	Water valve box up 1"

Photo of Block





Created	2015-05-13 15:59:53 UTC by Tablet App2
Updated	2015-05-13 15:59:53 UTC by Tablet App2
Location	39.8618976306541, -86.456517912528
Status	■ Needed

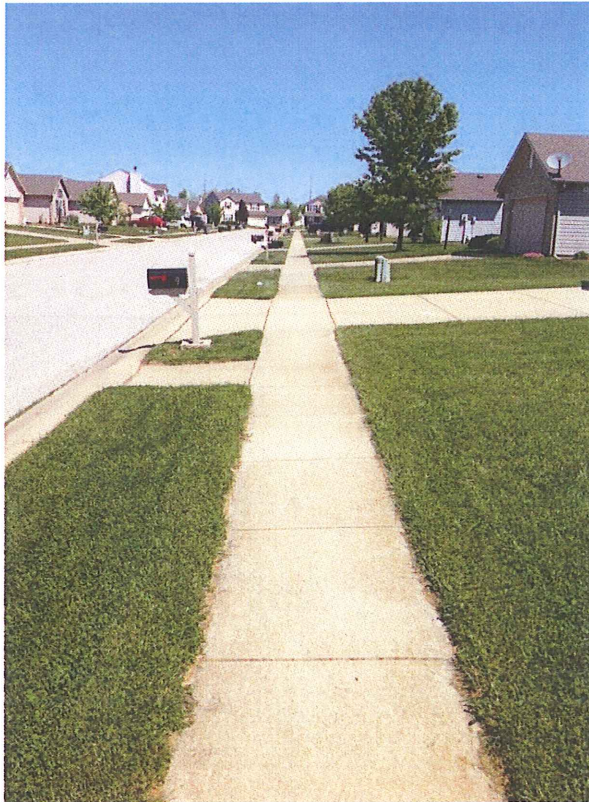
Identification

Side	Both
Surveyor	Jack
Street	Lynn ct

Inspection Data

Sidewalk Cross Slope	greater than 3%
Sidewalk Running Slope	1
Sidewalk Passing Space	Yes
Sidewalk Width Without Curb Feet	4
Sidewalk Width Without Curb Inch	0

Photo of Block



Created	2015-05-13 15:35:02 UTC by Tablet App2
Updated	2015-05-13 15:35:19 UTC by Tablet App2
Location	39.8625290394201, -86.4552994352639
Status	■ Needed

Identification

Side	Both
Date	2015-05-13
Surveyor	Jack
Street	Lasalle In

Inspection Data

Sidewalk Cross Slope	greater than 3%
Sidewalk Running Slope	1.9
Sidewalk Passing Space	Yes
Sidewalk Width Without Curb Feet	4
Sidewalk Width Without Curb Inch	0

Photo of Block



Lockerbie to Lasalle In

Created	2015-05-13 15:27:52 UTC by Tablet App2
Updated	2015-05-13 15:27:52 UTC by Tablet App2
Location	39.8613632005079, -86.4547108580232
Status	■ Needed

Identification

Segment	Lockerbie to Lasalle In
Side	E
Date	2015-05-13
Surveyor	Jack
Street	Broadmoor bend

Inspection Data

Sidewalk Cross Slope	greater than 3%
Sidewalk Running Slope	1.2
Sidewalk Passing Space	Yes
Sidewalk Vertical Discontinuities	Yes
Sidewalk Accessibility Obstacles	No
Sidewalk Width Without Curb Feet	4
Sidewalk Width Without Curb Inch	0
Comments	4 raised panels .5 to 1"

Photo of Block



Lockerbie to Lasalle In

Created	2015-05-13 15:20:55 UTC by Tablet App2
Updated	2015-05-13 15:20:55 UTC by Tablet App2
Location	39.86315923281, -86.4541033376813
Status	■ Needed

Identification

Segment	Lockerbie to Lasalle In
Side	W
Date	2015-05-13
Surveyor	Jack
Street	Broadmoor bend

Inspection Data

Sidewalk Cross Slope	greater than 3%
Sidewalk Running Slope	1.8
Sidewalk Vertical Discontinuities	Yes
Sidewalk Width Without Curb Feet	4
Sidewalk Width Without Curb Inch	0
Comments	2 raised panels.5"

Photo of Block



Broadmoor bend to brooks way

Created	2015-05-13 14:58:34 UTC by Tablet App2
Updated	2015-05-13 14:58:34 UTC by Tablet App2
Location	39.863617764823, -86.4542071894616
Status	 Needed

Identification

Segment	Broadmoor bend to brooks way
Side	N
Date	2015-05-13
Surveyor	Jack
Street	Lockerbie

Inspection Data

Sidewalk Obstructions	No
Sidewalk Cross Slope	2 - 3%
Sidewalk Running Slope	1.9
Sidewalk Passing Space	Yes
Sidewalk Vertical Discontinuities	Yes
Sidewalk Width Without Curb Feet	4
Sidewalk Width Without Curb Inch	0
Comments	4 raised panels.5"

Photo of Block



Broadmoor bend to brooks way

Created	2015-05-13 15:05:59 UTC by Tablet App2
Updated	2015-05-13 15:05:59 UTC by Tablet App2
Location	39.8641257919742, -86.4569425397426
Status	 Needed

Identification

Segment	Broadmoor bend to brooks way
Side	S
Date	2015-05-13
Surveyor	Jack
Street	Lockerbie

Inspection Data

Sidewalk Cross Slope	greater than 3%
Sidewalk Running Slope	1.5
Sidewalk Passing Space	Yes
Sidewalk Vertical Discontinuities	Yes
Sidewalk Width Without Curb Feet	4
Sidewalk Width Without Curb Inch	0
Comments	5 raised panels 1" to .5"

Photo of Block



N of broadmoor bend

Created	2015-05-13 16:14:55 UTC by Tablet App2
Updated	2015-05-13 16:14:55 UTC by Tablet App2
Location	39.8631180776654, -86.4579098113686
Status	■ Needed

Identification

Segment	N of broadmoor bend
Side	W
Date	2015-05-13
Surveyor	Jack
Street	Brooks way

Inspection Data

Sidewalk Cross Slope	greater than 3%
Sidewalk Running Slope	0.7
Sidewalk Passing Space	Yes
Sidewalk Width Without Curb Feet	4
Sidewalk Width Without Curb Inch	0

Photo of Block



N of broadmoor bend

Created	2015-05-13 16:08:59 UTC by Tablet App2
Updated	2015-05-13 16:08:59 UTC by Tablet App2
Location	39.8628270160778, -86.4577590209306
Status	■ Needed

Identification

Segment	N of broadmoor bend
Side	E
Date	2015-05-13
Surveyor	Jack
Street	Brooks way n of broadmoor bend

Inspection Data

Sidewalk Cross Slope	greater than 3%
Sidewalk Running Slope	1
Sidewalk Passing Space	Yes
Sidewalk Width Without Curb Feet	4
Sidewalk Width Without Curb Inch	0

Photo of Block



Brixton w to broadmoor bend

Created	2015-05-13 14:51:10 UTC by Tablet App2
Updated	2015-05-13 14:51:10 UTC by Tablet App2
Location	39.8633927107229, -86.4535542392046
Status	■ Needed

Identification

Segment	Brixton w to broadmoor bend
Side	Both
Date	2015-05-13
Surveyor	Jack
Street	Lockerbie

Inspection Data

Sidewalk Cross Slope	2 - 3%
Sidewalk Running Slope	3.5
Sidewalk Passing Space	Yes
Sidewalk Vertical Discontinuities	Yes
Sidewalk Width Without Curb Inch	0
Comments	Panel raised 1"

Photo of Block



Lockerbie to morse ct

Created	2015-05-13 13:12:03 UTC by Tablet App2
Updated	2015-05-18 12:55:28 UTC by Tablet App2
Location	39.862869931422, -86.4528954216153
Status	■ Not Urgent

Identification

Segment	Lockerbie to morse ct
Side	W
Date	2015-05-13
Surveyor	Jack
Street	Brixton woods w dr

Inspection Data

Sidewalk Cross Slope	less than 2%
Sidewalk Running Slope	1.5
Sidewalk Passing Space	Yes
Sidewalk Width Without Curb Inch	0
Comments	100' x slope 4%

Photo of Block



Lockerbie to morse ct

Created	2015-05-13 13:17:56 UTC by Tablet App2
Updated	2015-05-13 13:17:56 UTC by Tablet App2
Location	39.8599878140165, -86.4524068404794
Status	■ Needed

Identification

Segment	Lockerbie to morse ct
Side	E
Date	2015-05-13
Surveyor	Jack
Street	Brixton woods w dr

Inspection Data

Sidewalk Cross Slope	2 - 3%
Sidewalk Running Slope	1.5
Sidewalk Passing Space	Yes
Sidewalk Vertical Discontinuities	Yes
Sidewalk Width Without Curb Inch	0
Comments	Raised panel 1"

Photo of Block



Created	2015-05-13 13:34:38 UTC by Tablet App2
Updated	2015-05-18 12:55:51 UTC by Tablet App2
Location	39.859661893086, -86.4522164120717
Status	■ Not Urgent

Identification

Side	Both
Date	2015-05-13
Surveyor	Jack
Street	Morse circle

Inspection Data

Sidewalk Cross Slope	less than 2%
Sidewalk Running Slope	2
Sidewalk Passing Space	Yes
Sidewalk Vertical Discontinuities	Yes
Sidewalk Width Without Curb Feet	4
Sidewalk Width Without Curb Inch	0
Comments	25% of x slope 2-4%. 2 raised panels. .75"

Photo of Block



So of morse.

Created	2015-05-13 14:40:03 UTC by Tablet App2
Updated	2015-05-18 12:56:03 UTC by Tablet App2
Location	39.8589321552216, -86.4522262942851
Status	■ Not Urgent

Identification

Segment	So of morse.
Side	S
Date	2015-05-13
Surveyor	Jack
Street	Brixton woods w dr

Inspection Data

Sidewalk Cross Slope	less than 2%
Sidewalk Running Slope	2.2
Sidewalk Passing Space	Yes
Sidewalk Surface Discontinuities	No
Sidewalk Width Without Curb Feet	4
Sidewalk Width Without Curb Inch	0

Photo of Block



So of Morse

Created	2015-05-13 14:26:46 UTC by Tablet App2
Updated	2015-05-13 14:26:46 UTC by Tablet App2
Location	39.8587861843778, -86.4515023493082
Status	■ Needed

Identification

Segment	So of Morse
Side	N
Date	2015-05-13
Surveyor	Jack
Street	Brixton woods dr

Inspection Data

Sidewalk Cross Slope	greater than 3%
Sidewalk Running Slope	1.9
Sidewalk Passing Space	Yes
Sidewalk Width Without Curb Feet	4
Sidewalk Width Without Curb Inch	0

Photo of Block



136 to Bixton woods dr

Created	2015-05-12 20:51:04 UTC by Tablet App2
Updated	2015-05-12 20:51:04 UTC by Tablet App2
Location	39.8584369942917, -86.4510807395786
Status	 Needed

Identification

Segment	136 to Bixton woods dr
Date	2015-05-12
Surveyor	Jack
Street	Bixton woods blvd
Type of Project	New Construction

Inspection Data

Sidewalk Obstructions	No
Sidewalk Status	Active
Sidewalk Cross Slope	greater than 3%
Sidewalk Running Slope	2.5
Sidewalk Passing Space	No
Sidewalk Surface Discontinuities	No
Sidewalk Vertical Discontinuities	No
Sidewalk Accessibility Obstacles	No
Paving Obstructions (greater than 1/2")	No
Sidewalk Width Without Curb Inch	0
Comments	E & W sides

Photo of Block



Photo



Brixton woods blvd to castlegate ct

Created	2015-05-13 11:31:45 UTC by Tablet App2
Updated	2015-05-13 11:32:11 UTC by Tablet App2
Location	39.8589259945227, -86.450857026583
Status	■ Needed

Identification

Segment	Brixton woods blvd to castlegate ct
Side	E
Date	2015-05-13
Surveyor	Jack
Street	Brixton woods dr

Inspection Data

Sidewalk Obstructions	No
Sidewalk Status	Active
Sidewalk Cross Slope	2 - 3%
Sidewalk Running Slope	1.5
Sidewalk Passing Space	No
Sidewalk Vertical Discontinuities	No
Sidewalk Width Without Curb Feet	4
Sidewalk Width Without Curb Inch	0

Photo of Block



Created	2015-05-13 11:38:23 UTC by Tablet App2
Updated	2015-05-13 11:38:23 UTC by Tablet App2
Location	39.8591247294469, -86.4502488356889
Status	■ Needed

Identification

Date	2015-05-13
Surveyor	Jack
Street	Castlegate ct


Inspection Data

Sidewalk Obstructions	No
Sidewalk Status	Active
Sidewalk Cross Slope	greater than 3%
Sidewalk Running Slope	0.5
Sidewalk Passing Space	No
Sidewalk Surface Discontinuities	No
Sidewalk Vertical Discontinuities	No
Sidewalk Accessibility Obstacles	No
Paving Obstructions (greater than 1/2")	No
Sidewalk Width Without Curb Feet	4
Sidewalk Width Without Curb Inch	0
Comments	5 cracked panels Both sides of street

Photo of Block



Castlegate to brookland In

Created	2015-05-13 11:44:39 UTC by Tablet App2
Updated	2015-05-13 11:44:39 UTC by Tablet App2
Location	39.8596452037244, -86.4500631765336
Status	 Needed

Identification

Segment	Castlegate to brookland In
Side	E
Date	2015-05-13
Surveyor	Jack
Street	Brixton woods e dr

Inspection Data

Sidewalk Obstructions	No
Sidewalk Status	Active
Sidewalk Cross Slope	2 - 3%
Sidewalk Running Slope	1
Sidewalk Passing Space	Yes
Sidewalk Surface Discontinuities	No
Sidewalk Vertical Discontinuities	No
Sidewalk Accessibility Obstacles	No
Paving Obstructions (greater than 1/2")	Yes
Sidewalk Width Without Curb Feet	4
Sidewalk Width Without Curb Inch	0
Comments	1 raised panel .5"

Photo of Block



Created	2015-05-13 11:48:26 UTC by Tablet App2
Updated	2015-05-13 11:48:26 UTC by Tablet App2
Location	39.8600422544776, -86.4492834919006
Status	■ Needed

Identification

Date	2015-05-13
Surveyor	Jack
Street	Brookland In

Inspection Data

Sidewalk Obstructions	No
Sidewalk Status	Active
Sidewalk Cross Slope	greater than 3%
Sidewalk Running Slope	1.5
Sidewalk Passing Space	Yes
Sidewalk Surface Discontinuities	No
Paving Obstructions (greater than 1/2")	Yes
Sidewalk Width Without Curb Feet	4
Sidewalk Width Without Curb Inch	0
Comments	2 raised panels .5"

Photo of Block



South of Lockerbie

Created	2015-05-13 11:59:12 UTC by Tablet App2
Updated	2015-05-13 11:59:12 UTC by Tablet App2
Location	39.8608063906802, -86.449641315347
Status	■ Needed

Identification

Segment	South of Lockerbie
Side	E
Date	2015-05-13
Surveyor	Jack
Street	E brixton woods dr

Inspection Data

Sidewalk Cross Slope	greater than 3%
Sidewalk Running Slope	2.3
Sidewalk Passing Space	Yes
Paving Obstructions (greater than 1/2")	Yes
Sidewalk Width Without Curb Feet	4
Sidewalk Width Without Curb Inch	0
Comments	3 raised panels .5"

Photo of Block



Lockerbie to brixton woods dr

Created	2015-05-13 12:12:29 UTC by Tablet App2
Updated	2015-05-20 13:32:06 UTC by Tablet App2
Location	39.8623191984742, -86.4508398436815
Status	■ Needed

Identification

Segment	Lockerbie to brixton woods dr
Side	W
Date	2015-05-13
Surveyor	Jack
Street	E brixton woods dr

Inspection Data

Sidewalk Obstructions	No
Sidewalk Cross Slope	greater than 3%
Sidewalk Running Slope	3
Sidewalk Passing Space	Yes
Sidewalk Vertical Discontinuities	Yes
Sidewalk Width Without Curb Feet	4
Sidewalk Width Without Curb Inch	0
Comments	5 raised panels. .5 to 1"

Photo of Block



E of e brixton woods dr

Created	2015-05-13 12:27:41 UTC by Tablet App2
Updated	2015-05-13 12:30:09 UTC by Tablet App2
Location	39.8625644948705, -86.4508602955252
Status	■ Needed

Identification

Segment	E of e brixton woods dr
Side	Both
Date	2015-05-13
Surveyor	Jack
Street	Lockerbie In

Inspection Data

Sidewalk Obstructions	Yes
Sidewalk Cross Slope	2 - 3%
Sidewalk Running Slope	2
Sidewalk Passing Space	Yes
Sidewalk Vertical Discontinuities	Yes
Sidewalk Width Without Curb Feet	4
Sidewalk Width Without Curb Inch	0
Comments	Raised panel .5". Pinned location is wrong. See segment

Photo of Block



Brixton woods w to brixton woods e dr

Created	2015-05-13 12:42:44 UTC by Tablet App2
Updated	2015-05-13 12:42:44 UTC by Tablet App2
Location	39.8627076158671, -86.4513702505142
Status	■ Needed

Identification

Segment	Brixton woods w to brixton woods e dr
Side	S
Date	2015-05-13
Surveyor	Jack
Street	Lockerbie Ln

Inspection Data

Sidewalk Obstructions	No
Sidewalk Cross Slope	2 - 3%
Sidewalk Passing Space	Yes
Sidewalk Width Without Curb Feet	4
Sidewalk Width Without Curb Inch	0

Photo of Block



Created	2015-05-13 12:58:19 UTC by Tablet App2
Updated	2015-05-13 12:58:19 UTC by Tablet App2
Location	39.8622180708124, -86.4520037547559
Status	■ Needed

Identification

Side	Both
Date	2015-05-13
Surveyor	Jack
Street	Kensington ct

Inspection Data

Sidewalk Cross Slope	greater than 3%
Sidewalk Running Slope	2
Sidewalk Passing Space	Yes
Sidewalk Width Without Curb Feet	4
Sidewalk Width Without Curb Inch	0
Comments	50% of east side x slope is < 2%

Photo of Block



Brixton woods w to brixton woods e dr

Created	2015-05-13 12:38:13 UTC by Tablet App2
Updated	2015-05-13 12:38:13 UTC by Tablet App2
Location	39.8630226496978, -86.4521527011753
Status	■ Needed

Identification

Segment	Brixton woods w to brixton woods e dr
Side	N
Date	2015-05-13
Surveyor	Jack
Street	Lockerbie Ln

Inspection Data

Sidewalk Obstructions	No
Sidewalk Cross Slope	2 - 3%
Sidewalk Running Slope	1
Sidewalk Passing Space	Yes
Sidewalk Vertical Discontinuities	Yes
Sidewalk Width Without Curb Feet	4
Sidewalk Width Without Curb Inch	0
Comments	3 raised panels,5"

Photo of Block



North of Ridgeway ct

Created	2015-05-14 13:33:00 UTC by Tablet App2
Updated	2015-05-18 12:56:30 UTC by Tablet App2
Location	39.857338294424, -86.4517126512587
Status	■ Not Urgent

Identification

Segment	North of Ridgeway ct
Side	Both
Date	2015-05-14
Surveyor	Jack
Street	Woodland dr

Inspection Data

Sidewalk Cross Slope	less than 2%
Sidewalk Running Slope	2.3
Sidewalk Passing Space	Yes
Sidewalk Surface Discontinuities	Yes
Sidewalk Width Without Curb Inch	0
Comments	West side under construction

Photo of Block



Created	2015-05-14 13:21:13 UTC by Tablet App2
Updated	2015-05-18 12:56:20 UTC by Tablet App2
Location	39.8571674293278, -86.4515454322905
Status	■ Not Urgent

Identification

Side	Both
Date	2015-05-14
Surveyor	Jack
Street	Ridgeway ct

Inspection Data

Sidewalk Cross Slope	less than 2%
Sidewalk Running Slope	3
Sidewalk Passing Space	Yes
Sidewalk Vertical Discontinuities	Yes
Sidewalk Width Without Curb Feet	4
Sidewalk Width Without Curb Inch	0
Comments	Short area in cul de sac 3% x slope. 3 raised panels .5"

Photo of Block



Created	2015-05-14 13:13:17 UTC by Tablet App2
Updated	2015-05-18 12:56:39 UTC by Tablet App2
Location	39.8572515417262, -86.4519436565102
Status	■ Not Urgent

Identification

Side	Both
Surveyor	Jack
Street	Johnston ct

Inspection Data

Sidewalk Cross Slope	less than 2%
Sidewalk Running Slope	1
Sidewalk Passing Space	Yes
Sidewalk Surface Discontinuities	Yes
Sidewalk Width Without Curb Feet	4
Sidewalk Width Without Curb Inch	0
Comments	North side under construction

Photo of Block



Lakeview to Ridgeway

Created	2015-05-14 12:22:27 UTC by Tablet App2
Updated	2015-05-14 12:29:51 UTC by Tablet App2
Location	39.8569899844377, -86.4521574788601
Status	■ Needed

Identification

Segment	Lakeview to Ridgeway
Side	W
Date	2015-05-14
Surveyor	Jack
Street	Woodland dr

Inspection Data

Sidewalk Cross Slope	greater than 3%
Sidewalk Running Slope	2.6
Sidewalk Passing Space	Yes
Sidewalk Width Without Curb Feet	4
Sidewalk Width Without Curb Inch	0

Photo of Block



Created	2015-05-14 13:02:40 UTC by Tablet App2
Updated	2015-05-14 13:02:40 UTC by Tablet App2
Location	39.8568229558223, -86.4523483865042
Status	■ Needed

Identification

Side	Both
Date	2015-05-14
Surveyor	Jack
Street	Lakeview ct

Inspection Data

Sidewalk Cross Slope	less than 2%
Sidewalk Running Slope	1.4
Sidewalk Passing Space	Yes
Sidewalk Width Without Curb Feet	4
Sidewalk Width Without Curb Inch	0

Photo of Block



Woodview to Lakeview

Created	2015-05-14 12:26:57 UTC by Tablet App2
Updated	2015-05-18 12:56:50 UTC by Tablet App2
Location	39.8564237868785, -86.4523389470637
Status	■ Not Urgent

Identification

Segment	Woodview to Lakeview
Side	W
Date	2015-05-14
Surveyor	Jack
Street	Woodland dr

Inspection Data

Sidewalk Cross Slope	less than 2%
Sidewalk Running Slope	1.2
Sidewalk Passing Space	Yes
Sidewalk Width Without Curb Feet	4
Sidewalk Width Without Curb Inch	0

Photo of Block



Woodview to Ridgeway

Created	2015-05-14 12:20:20 UTC by Tablet App2
Updated	2015-05-14 12:28:12 UTC by Tablet App2
Location	39.8560913605987, -86.4520361089021
Status	■ Needed

Identification

Segment	Woodview to Ridgeway
Side	E
Date	2015-05-14
Surveyor	Jack
Street	Woodland dr

Inspection Data

Sidewalk Cross Slope	2 - 3%
Sidewalk Running Slope	3
Sidewalk Passing Space	Yes
Sidewalk Width Without Curb Feet	4
Sidewalk Width Without Curb Inch	0

Photo of Block



Woodview dr to woods edge ct

Created	2015-05-14 11:09:59 UTC by Tablet App2
Updated	2015-05-14 11:18:57 UTC by Tablet App2
Location	39.8556309426575, -86.4513556660027
Status	■ Not Urgent

Identification

Segment	Woodview dr to woods edge ct
Side	S
Date	2015-05-14
Surveyor	Jack
Street	Woodland hills dr

Inspection Data

Sidewalk Cross Slope	less than 2%
Sidewalk Running Slope	1
Sidewalk Passing Space	Yes
Sidewalk Width Without Curb Feet	4
Sidewalk Width Without Curb Inch	0

Photo of Block



Created	2015-05-14 12:11:29 UTC by Tablet App2
Updated	2015-05-14 12:11:29 UTC by Tablet App2
Location	39.8554862290992, -86.4508938231379
Status	■ Needed

Identification

Side	Both
Date	2015-05-14
Surveyor	Jack
Street	Woods edge ct

Inspection Data

Sidewalk Cross Slope	greater than 3%
Sidewalk Running Slope	4
Sidewalk Passing Space	Yes
Sidewalk Width Without Curb Feet	4
Sidewalk Width Without Curb Inch	0
Comments	Few short areas < 2%

Photo of Block



Woodview dr to end

Created	2015-05-14 11:17:01 UTC by Tablet App2
Updated	2015-05-14 11:17:01 UTC by Tablet App2
Location	39.8555871891229, -86.450148839584
Status	■ Not Urgent

Identification

Segment	Woodview dr to end
Side	N
Date	2015-05-14
Surveyor	Jack
Street	Woodland hills dr

Inspection Data

Sidewalk Cross Slope	less than 2%
Sidewalk Running Slope	3
Sidewalk Passing Space	Yes
Sidewalk Surface Discontinuities	Yes
Sidewalk Width Without Curb Feet	4
Sidewalk Width Without Curb Inch	0
Comments	1 lot w no walks

Photo of Block



East of woods edge ct

Created	2015-05-14 11:10:47 UTC by Tablet App2
Updated	2015-05-14 11:20:30 UTC by Tablet App2
Location	39.8553969199209, -86.4500878193289
Status	■ Needed

Identification

Segment	East of woods edge ct
Side	S
Date	2015-05-14
Surveyor	Jack
Street	Woodland hills dr

Inspection Data

Sidewalk Cross Slope	greater than 3%
Sidewalk Running Slope	3
Sidewalk Passing Space	Yes
Sidewalk Width Without Curb Feet	4
Sidewalk Width Without Curb Inch	0

Photo of Block



North of Hawthorne

Created	2015-05-13 20:25:00 UTC by Tablet App2
Updated	2015-05-13 20:25:00 UTC by Tablet App2
Location	39.8544222722201, -86.4527261071712
Status	■ Not Urgent

Identification

Segment	North of Hawthorne
Side	Both
Date	2015-05-13
Surveyor	Jack
Street	Woodview dr

Inspection Data

Sidewalk Cross Slope	2 - 3%
Sidewalk Running Slope	1.8
Sidewalk Passing Space	Yes
Sidewalk Surface Discontinuities	Yes
Sidewalk Width Without Curb Inch	0
Comments	One lot w no walks

Photo of Block



Fox tr to woodview dr

Created	2015-05-13 18:06:12 UTC by Tablet App2
Updated	2015-05-13 19:52:53 UTC by Tablet App2
Location	39.8539441265537, -86.4516831469596
Status	■ Not Urgent

Identification

Segment	Fox tr to woodview dr
Side	S
Date	2015-05-13
Surveyor	Jack
Street	Hawthorne dr

Inspection Data

Sidewalk Cross Slope	2 - 3%
Sidewalk Running Slope	0.5
Sidewalk Passing Space	Yes
Sidewalk Surface Discontinuities	Yes
Sidewalk Width Without Curb Feet	4
Sidewalk Width Without Curb Inch	0
Comments	2 empty lots w/no walks

Photo of Block



Fox tr to woodview dr

Created	2015-05-13 17:58:26 UTC by Tablet App2
Updated	2015-05-13 18:11:04 UTC by Tablet App2
Location	39.8528823070599, -86.4496474341363
Status	■ Not Urgent

Identification

Segment	Fox tr to woodview dr
Side	N
Date	2015-05-13
Surveyor	Jack
Street	Hawthorne dr

Inspection Data

Sidewalk Cross Slope	less than 2%
Sidewalk Running Slope	0.6
Sidewalk Passing Space	Yes
Sidewalk Width Without Curb Feet	4
Sidewalk Width Without Curb Inch	0
Comments	Several short areas <100' total over 2%

Photo of Block



South of Hawthorne dr

Created	2015-05-13 20:09:13 UTC by Tablet App2
Updated	2015-05-13 20:09:13 UTC by Tablet App2
Location	39.8536677332966, -86.4528638218403
Status	■ Not Urgent

Identification

Segment	South of Hawthorne dr
Side	Both
Date	2015-05-13
Surveyor	Jack
Street	Woodview dr

Inspection Data

Sidewalk Cross Slope	less than 2%
Sidewalk Running Slope	1.7
Sidewalk Passing Space	Yes
Sidewalk Surface Discontinuities	Yes
Sidewalk Width Without Curb Inch	0
Comments	One lot w no walks.

Photo of Block



Created	2015-05-13 19:52:40 UTC by Tablet App2
Updated	2015-05-13 19:52:40 UTC by Tablet App2
Location	39.8532375321163, -86.4524544496894
Status	■ Not Urgent

Identification

Side	Both
Date	2015-05-13
Surveyor	Jack
Street	Wind drift ct

Inspection Data

Sidewalk Cross Slope	2 - 3%
Sidewalk Running Slope	1.5
Sidewalk Passing Space	Yes
Sidewalk Width Without Curb Feet	4
Sidewalk Width Without Curb Inch	0

Photo of Block



Created	2015-05-13 19:29:43 UTC by Tablet App2
Updated	2015-05-13 19:29:43 UTC by Tablet App2
Location	39.8519315896927, -86.4517837297976
Status	■ Not Urgent

Identification

Side	Both
Date	2015-05-13
Surveyor	Jack
Street	Lakeside ct

Inspection Data

Sidewalk Cross Slope	2 - 3%
Sidewalk Running Slope	1.2
Sidewalk Passing Space	Yes
Sidewalk Surface Discontinuities	Yes
Sidewalk Width Without Curb Feet	4
Sidewalk Width Without Curb Inch	0
Comments	50% of area is < 2%. One lot w no walks

Photo of Block



So of windrift ct

Created	2015-05-13 19:38:31 UTC by Tablet App2
Updated	2015-05-13 19:41:28 UTC by Tablet App2
Location	39.851784917772, -86.4523232998974
Status	■ Not Urgent

Identification

Segment	So of windrift ct
Side	Both
Date	2015-05-13
Surveyor	Jack
Street	Woodview dr

Inspection Data

Sidewalk Cross Slope	2 - 3%
Sidewalk Running Slope	1.2
Sidewalk Passing Space	Yes
Sidewalk Surface Discontinuities	Yes
Sidewalk Width Without Curb Feet	4
Sidewalk Width Without Curb Inch	0
Comments	2 lots w no walks. Pinned location wrong

Photo of Block



Created	2015-05-13 19:16:53 UTC by Tablet App2
Updated	2015-05-13 19:16:53 UTC by Tablet App2
Location	39.8515394842623, -86.4527841937602
Status	■ Not Urgent

Identification

Side	Both
Date	2015-05-13
Surveyor	Jack
Street	Lakeside dr

Inspection Data

Sidewalk Cross Slope	less than 2%
Sidewalk Running Slope	2
Sidewalk Surface Discontinuities	Yes
Sidewalk Width Without Curb Feet	4
Sidewalk Width Without Curb Inch	0
Comments	3 lots w/ no walks

Photo of Block



Entrance to sub

Created	2015-05-20 13:22:51 UTC by Tablet App2
Updated	2015-05-20 13:22:51 UTC by Tablet App2
Location	39.8644996248557, -86.4448150993199
Status	■ Not Urgent

Identification

Segment	Entrance to sub
Side	Both
Date	2015-05-20
Surveyor	Jack
Street	Jefferson Park dr

Inspection Data

Sidewalk Cross Slope	less than 2%
Sidewalk Running Slope	1.6
Sidewalk Passing Space	Yes
Sidewalk Surface Discontinuities	Yes
Sidewalk Vertical Discontinuities	Yes
Sidewalk Width Without Curb Inch	0
Comments	2 raised panels 3/4". Subdivision with < 50% of lots built on.

Photo of Block



Created	2015-05-20 13:43:09 UTC by Tablet App2
Updated	2015-05-20 13:43:09 UTC by Tablet App2
Location	39.8634706334387, -86.4476873652893
Status	■ Not Urgent

Identification

Side	Both
Date	2015-05-20
Surveyor	Jack
Street	Freedom dr / Albermarie Dr

Inspection Data

Sidewalk Cross Slope	less than 2%
Sidewalk Running Slope	1.2
Sidewalk Surface Discontinuities	Yes
Sidewalk Width Without Curb Inch	0
Comments	Subdivision with < 50% of lots built on.

Photo of Block



Created	2015-05-20 13:36:18 UTC by Tablet App2
Updated	2015-05-20 13:36:18 UTC by Tablet App2
Location	39.8657734645902, -86.4479252883107
Status	■ Not Urgent

Identification

Side	Both
Date	2015-05-20
Surveyor	Jack
Street	Wayles dr

Inspection Data

Sidewalk Cross Slope	less than 2%
Sidewalk Running Slope	2
Sidewalk Passing Space	Yes
Sidewalk Surface Discontinuities	Yes
Sidewalk Width Without Curb Feet	4
Sidewalk Width Without Curb Inch	0
Comments	Subdivision with < 50% of lots built on.

Photo of Block



Created	2015-05-20 13:27:59 UTC by Tablet App2
Updated	2015-05-20 13:27:59 UTC by Tablet App2
Location	39.8667309203239, -86.4468738380674
Status	■ Not Urgent

Identification

Side	Both
Date	2015-05-20
Surveyor	Jack
Street	Declaration Dr

Inspection Data

Sidewalk Cross Slope	less than 2%
Sidewalk Running Slope	1.7
Sidewalk Surface Discontinuities	Yes
Sidewalk Width Without Curb Feet	4
Sidewalk Width Without Curb Inch	0
Comments	Subdivision with < 50% of lots built on.

Photo of Block



NW corner of loop

Created	2015-05-20 13:03:35 UTC by Tablet App2
Updated	2015-05-20 13:10:17 UTC by Tablet App2
Location	39.8643739559377, -86.4434534184693
Status	■ Not Urgent

Identification

Segment	NW corner of loop
Side	Both
Date	2015-05-20
Surveyor	Jack
Street	Fennel dr

Inspection Data

Sidewalk Cross Slope	less than 2%
Sidewalk Running Slope	2.2
Sidewalk Surface Discontinuities	Yes
Sidewalk Width Without Curb Inch	0
Comments	Subdivision with only 4 houses built

Photo of Block



SE corner of loop

Created	2015-05-20 12:54:58 UTC by Tablet App2
Updated	2015-05-20 13:00:08 UTC by Tablet App2
Location	39.8635005439072, -86.4394686185629
Status	■ Not Urgent

Identification

Segment	SE corner of loop
Side	W
Surveyor	Jack

Inspection Data

Sidewalk Cross Slope	less than 2%
Sidewalk Running Slope	1.6
Sidewalk Surface Discontinuities	Yes
Sidewalk Width Without Curb Inch	0
Comments	Subdivision with only 4 houses built

Photo of Block

